



Machin Engineering, Inc.
 2301 N Garfield Rd, Suite C
 Traverse City, MI 49686
 ph 855.935-1530
 www.machinengineeing.net

**OPINION OF PROBABLE CONSTRUCTION COST
 LEELANAU COUNTY GOVERNMENT CENTER
 REAR ENTRY REPAIR STUDY (MEI JN #22064)
 June 28, 2022**

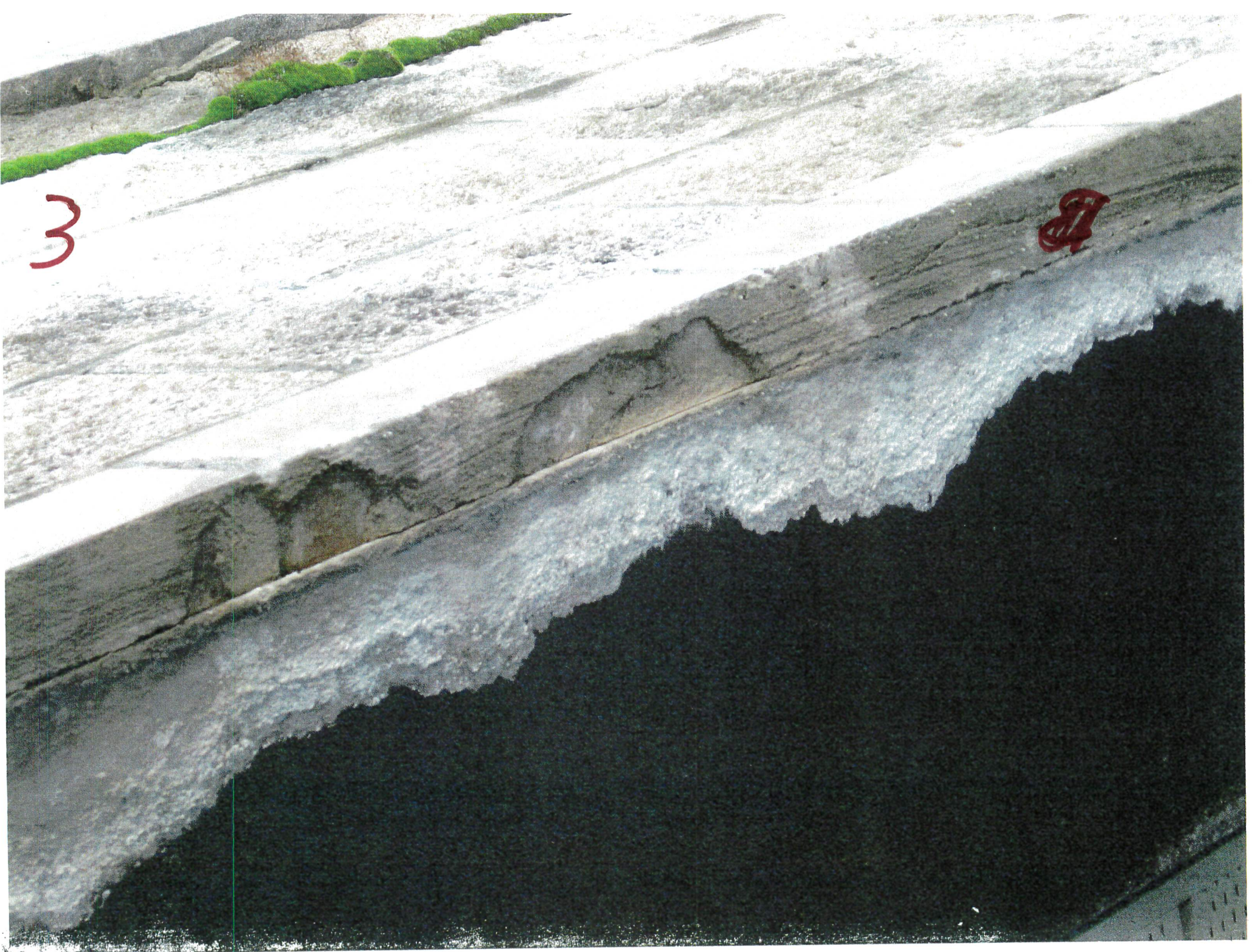
Item No.	Item Description	Unit	Qty.	Unit Cost	Cost
General					
1	General Conditions	LS	1	\$102,300.00	\$102,300.00
2	Demolition & Site Construction	LS	1	36,000.00	36,000.00
Repair & Replacement					
3	Concrete and Masonry	LS	1	63,500.00	63,500.00
4	Steel	LS	1	21,400.00	21,400.00
5	Wood Framing	LS	1	41,000.00	41,000.00
6	Thermal and Moisture	LS	1	38,000.00	38,000.00
7	Exterior Finish Trim & Flashing	LS	1	4,000.00	4,000.00
8	Electrical & Low Voltage	LS	1	27,200.00	27,200.00
9	Mechanical	LS	1	8,300.00	8,300.00
SUBTOTAL:					\$341,700.00
20% CONTINGENCIES:					\$68,300.00
ENGINEERING DESIGN, CONSTRUCTION ADMINISTRATION:					\$20,000.00
TOTAL ESTIMATED PROJECT COST:					\$430,000.00

- This cost estimate is approximate. Actual construction bids may vary significantly from this statement of probable costs due to timing of construction, changed conditions, labor rate changes, or other factors beyond the control of Machin Engineering, Inc.
- Does not include MEP engineering and assumes protection of existing heated walkway.
- Conceptual sketches attached were used in this cost study.



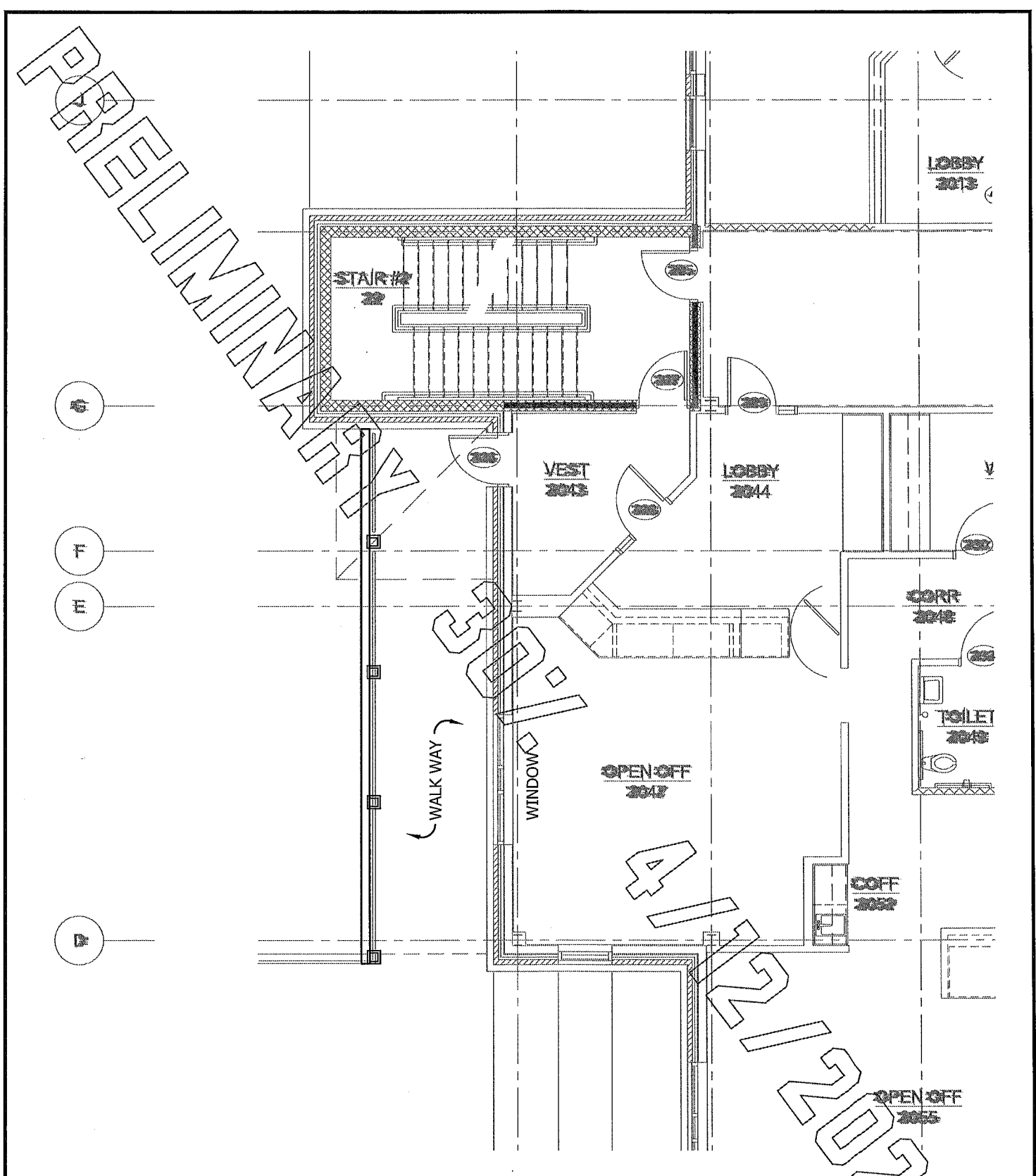
2











CREATED:
 04/12/2022
 DRN BY: KAS
 CKD BY:
 SUBMITTED FOR:
 30% REVIEW
 PROJECT NUMBER:
 22064


MACHINENGINEERING
 Incorporation
 Machin Engineering, Inc
 2301 Garfield Road, Suite C
 Traverse City, Michigan 49686
 PH 231.935.1530

LEELANAU COUNTY
LEELANAU CO GOV'T CENTER
 PLAN VIEW
 GOVERNMENTAL CENTER, LEELANAU CO, MI
www.machinengineering.net

SHEET NO:
SK1

PRELIMINARY



4/12/2022 SK2

CREATED:
04/12/2022

DRN BY: CKD BY:
KAS .

SUBMITTED FOR:
30% REVIEW

PROJECT NUMBER:
22064


MACHINENGINEERING
incorporation

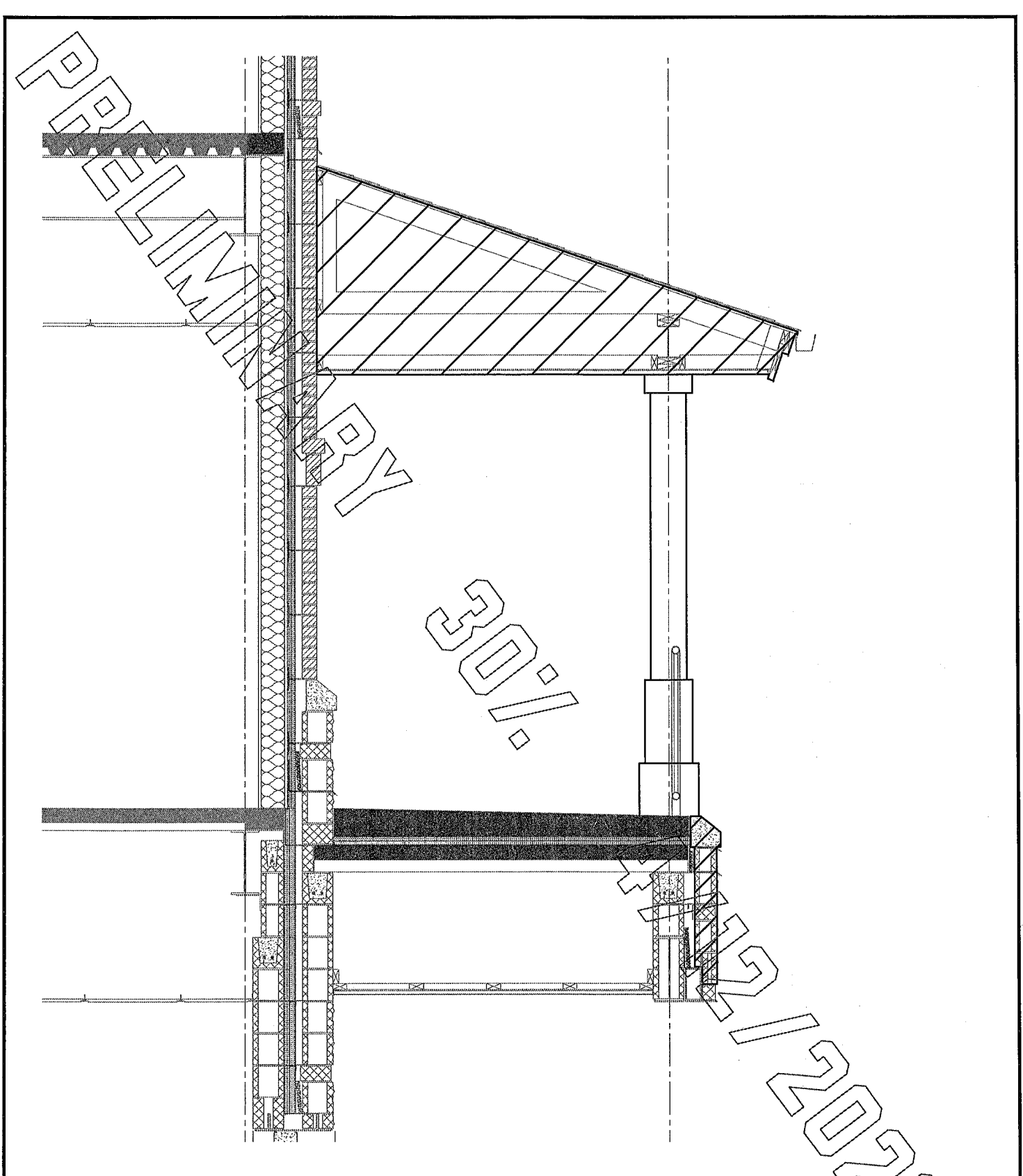
Machin Engineering, Inc
2301 Garfield Road, Suite C
Traverse City, Michigan 49686
PH 231.935.1530

LEELANAU COUNTY
LEELANAU CO GOV'T CENTER
ELEVATION VIEW

GOVERNMENTAL CENTER, LEELANAU CO, MI

www.machinengineering.net

SHEET NO:
SK2



CREATED:
04/12/2022

DRN BY: KAS CKD BY: .

SUBMITTED FOR:
30% REVIEW

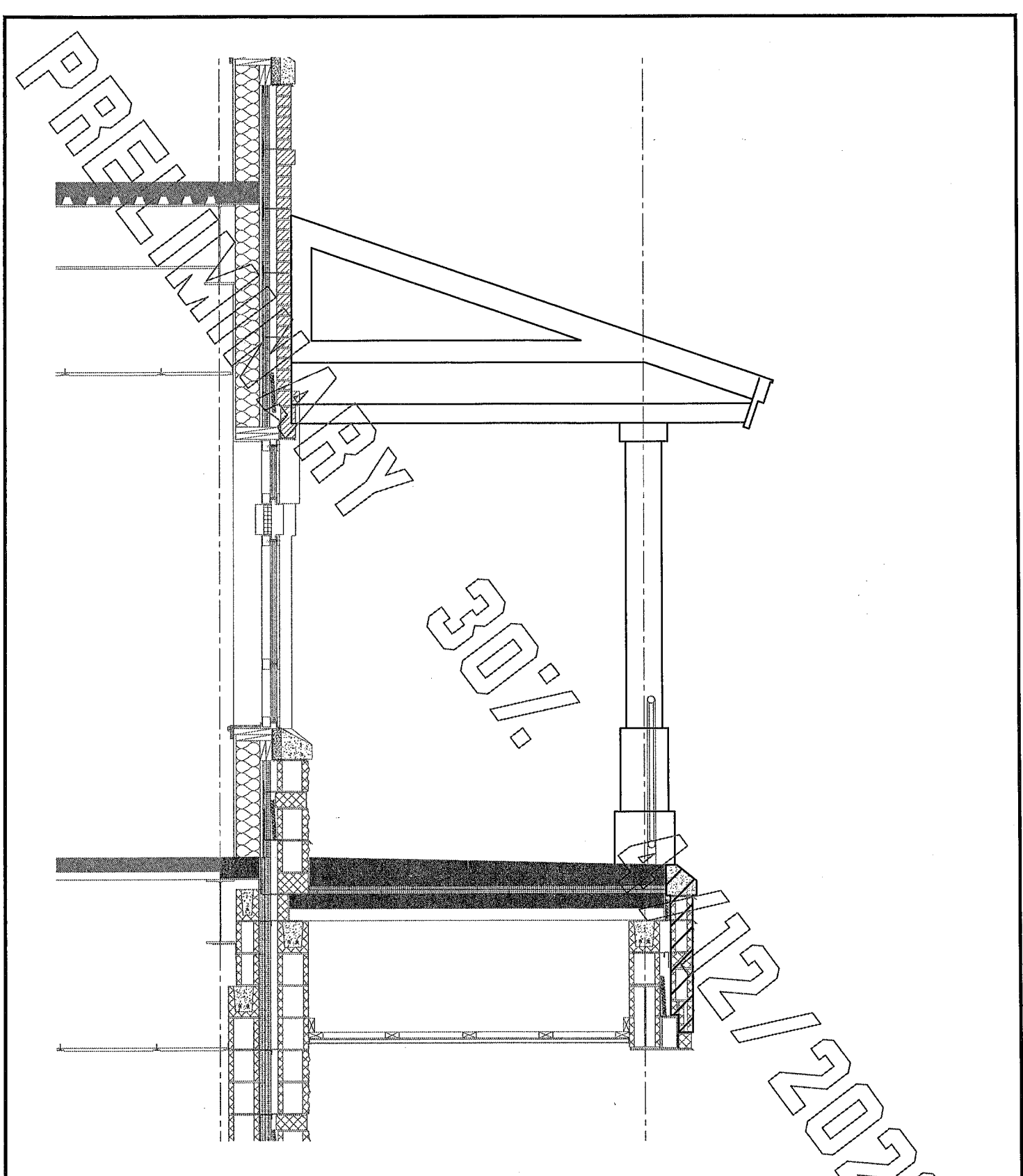
PROJECT NUMBER:
22064

MACHINENGINEERING
incorporation

Machin Engineering, Inc
2301 Garfield Road, Suite C
Traverse City, Michigan 49686
PH 231.935.1530

LEELANAU COUNTY
LEELANAU CO GOV'T CENTER
WALL SECTION
GOVERNMENTAL CENTER, LEELANAU CO, MI
www.machinengineering.net

SHEET NO:
SK3



CREATED:
04/12/2022

DRN BY: KAS CKD BY: .

SUBMITTED FOR:
30% REVIEW

PROJECT NUMBER:
22064

MACHINENGINEERING
incorporation

Machin Engineering, Inc
2301 Garfield Road, Suite C
Traverse City, Michigan 49686
PH 231.935.1530

LEELANAU COUNTY
LEELANAU CO GOV'T CENTER
WALL SECTION
GOVERNMENTAL CENTER, LEELANAU CO, MI
www.machinengineering.net

SHEET NO:
SK4