

Cedar Fire Department



2014 Run Statistics and Analysis
January 1st – December 31st, 2014

January 1st – December 31th
EMS/FIRE

Total EMS Runs and Fire Runs

542

Prepared by: Tim Johnson

2014

Organizational Chart of Statistics

- Monthly Reports are comprised of
 - Total EMS/Fire Runs
 - Total Night and Daytime runs
 - Total of BLS runs and ALS runs
 - Number of Ambulance Transports
 - Total calls per township
 - Types of Fire Runs

January EMS/Fire Statistics

- 21 EMS Runs

- 16 Day Shift runs
- 5 Night Shift runs

3 ALS Intercepts

18 BLS Runs

7 Ambulance Transports

Cle – 2

Kass – 5

Sol – 10

Cent – 3

GTC – 1

- 12 Fire Runs

- 8 Day Shift Runs
- 4 Night Shift Runs

- 5 Vehicle Accidents
- 2 Building Fires
- 2 False Alarms
- 1 Vehicle Fire
- 1 Power Line Down
- 1 Service Call

Cle – 0

Kass – 3

Sol – 5

Cent – 2

GTC – 1

Emp – 1

February EMS/Fire Statistics

- 22 EMS Runs

- 15 Day Shift Runs
- 7 Night Shift Runs

5 ALS Intercepts

17 BLS Runs

11 Ambulance Transports

Cle – 4

Kass – 9

Sol – 4

Cent – 5

- 9 Fire Runs

- 9 Day Shift Runs
- 0 Shift Night Runs

- 5 Vehicle Accidents

- 2 Hazardous Conditions

- 1 False Alarm

- 1 Severe Weather

Cle – 2

Kass – 3

Sol – 4

Cent – 0

March EMS/Fire Statistics

- 28 EMS Runs

- 22 Day Shift Runs
- 6 Night Shift Runs

5 ALS Intercepts

23 BLS Runs

9 Ambulance Transports

Cle – 7

Kass – 7

Sol – 10

Cent – 3

GTC – 1

- 9 Fire Runs

- 7 Day Shift Runs
- 1 Night Shift Runs

- 2 Building Fires

- 1 Service Call

- 3 False Alarms

- 3 Vehicle Accidents

Cle – 2

Kass – 2

Sol – 2

Cent – 1

Emp – 1

GTC – 1

April EMS/Fire Statistics

- 24 EMS Runs
 - 17 Day Shift Runs
 - 7 Night Shift Runs
- 8 ALS Intercepts
- 16 BLS Runs
- 10 Ambulance Transports

Cle – 2 Kass – 7
Sol – 7 Cent – 8

- 7 Fire Runs
 - 6 Day Shift Runs
 - 1 Night Shift Runs
- 3 – Vehicle Accidents (1 w/ Extrication)
- 1 – Grass Fire
- 1 - Hazardous Condition
- 1- Bomb/Munitions Explosion
- 1 – Severe Weather

Cle – 0 Kass – 2
Sol – 3 Cent – 2

May EMS/Fire Statistics

- 31 EMS Runs
 - 23 Day Shift Runs
 - 8 Night Shift Runs
- 5 ALS Intercepts
- 26 BLS Runs
- 14 Ambulance Transports

Cle – 6 Kass – 9
Sol – 8 Cent – 7
G.T. – 1

- 9 Fire Runs
 - 5 Day Shift Runs
 - 4 Night Shift Runs
 - 2 Building Fires
 - 2 Hazardous Conditions
 - 2 False Alarms
 - 1 Lockdown Drill
 - 1 Authorized Control Burn
 - 1 Grass Fire

Cle – 3 Kass – 3
Sol – 1 Cent – 0
G.T. – 1 Lel. – 1

June EMS/Fire Statistics

- 28 EMS Runs
 - 20 Day Shift Runs
 - 8 Night Shift Runs
- 4 ALS Intercepts
- 24 BLS Runs
- 10 Ambulance Transports

Cle – 5 Kass – 8
Sol – 11 Cent – 4

- 15 Fire Runs
 - 11 Day Shift Runs
 - 4 Night Shift Runs
- 3 Hazardous Condition
- 2 Power Lines Arcing/Down
- 3 Vehicle Accidents
- 2 Brush Fires
- 1 Building Fire
- 2 False Alarms
- 1 Authorized Controlled Burn
- 1 Assist Medical Personnel

Cle – 3 Kass – 4
Sol – 5 Cent – 2
G.T. – 1

July EMS/Fire Statistics

- 54 EMS Runs

- 33 Day Shift Runs
- 21 Night Shift Runs

10 ALS Intercepts

44 BLS Runs

24 Ambulance Transports

Cle – 8

Kass – 13

Sol – 22

Cent – 10

Elm – 1

- 17 Fire Runs

- 12 Day Shift Runs
- 5 Night Shift Runs

- 4 Vehicle Accidents (1 w/ Extrication)
- 2 Building Fires
- 3 Grass/Brush Fires
- 3 Power Lines Down
- 2 Hazardous Conditions
- 2 False Alarms
- 1 Gas Leak

Cle – 4

Kass – 9

Sol – 2

Cent – 0

G.T. – 2

August EMS/Fire Statistics

- 37 EMS Runs

- 27 Day Shift Runs
- 10 Night Shift Runs

7 ALS Intercepts

30 BLS Runs

13 Ambulance Transports

Cle – 6

Kass – 7

Sol – 12

Cent – 10

Emp – 2

- 13 Fire Runs

- 7 Day Shift Runs
- 6 Night Shift Runs

- 4 Vehicle Accidents (2 w/ Extrication)
- 1 CO Incident
- 2 False Alarms
- 1 Search and Rescue
- 1 Authorized Controlled Burn
- 1 Unauthorized Burn
- 1 Hazardous Condition
- 1 Vehicle Fire
- 1 Building Fire

Cle – 3

Kass – 2

Sol – 2

Cent – 5

G.T. – 1

September EMS/Fire Statistics

- 39 EMS Runs
 - 24 Day Shift Runs
 - 15 Night Shift Runs
- 4 ALS Intercepts
- 35 BLS Runs
- 11 Ambulance Transports

Cle – 10 Kas – 14
Sol – 9 Cent – 6

- 12 Fire Runs
 - 4 Day Shift Runs
 - 8 Night Shift Runs
 - 2 Hazardous Conditions
 - 1 Vehicle Fire
 - 2 Vehicle Accident (1 w/ Extrication)
 - 2 Building Fire
 - 1 Wildland Fire
 - 3 False Alarms
 - 1 Public Service
- Cle – 4 Kas – 2
Sol – 1 Cent – 1
Emp – 1 Elm – 1
G.T. – 2

October EMS/Fire Statistics

- 53 EMS Runs

- 39 Day Shift Runs
- 14 Night Shift Runs

6 ALS Intercepts

47 BLS Runs

21 Ambulance Transports

Cle – 7 Kas – 25

Sol – 12 Cent – 9

- 12 Fire Runs

- 9 Day Shift Runs
- 3 Night Shift Runs

- 2 Power Lines Down
- 2 Building Fire
- 2 False Alarm
- 3 Vehicle Accident
- 2 Hazardous Conditions
- 1 CO Incident

Cle – 2 Kas – 2

Sol – 2 Cent – 6

November EMS/Fire Statistics

- 34 EMS Runs
 - 21 Day Shift Runs
 - 13 Night Shift Runs
 - 8 ALS Intercepts
 - 26 BLS Runs
 - 15 Ambulance Transports
 - 9 Fire Runs
 - 7 Day Shift Runs
 - 2 Night Shift Runs
 - 9 Vehicle Accidents
- Cle – 8 Kas – 11
Sol – 13 Cent – 2
- Cle – 2 Kas – 2
Sol – 5 Cent – 0

December EMS/Fire Statistics

- 38 EMS Runs
 - 19 Day Shift Runs
 - 19 Night Shift Runs
- 6 ALS Intercepts
- 32 BLS Runs
- 18 Ambulance Transports

Cle – 8 Kas – 13
Sol – 9 Cent – 8

- 8 Fire Runs
 - 5 Day Shift Runs
 - 3 Night Shift Runs
 - 2 Building Fires
 - 4 False Alarms
 - 1 Vehicle Accident
 - 1 Power Line Down
- Cle – 3 Kas – 1
Sol – 1 Cent – 3

2014 Totals

January 1st – December 31st

EMS Stats

- 409 EMS Runs
 - 276 Day Shift Runs
 - 133 Night Runs
 - 163 Total Transports
- 338 Basic Runs
71 ALS Runs

Cle – 73 Kass – 128

Sol – 127 Cent – 75

G.T. – 3 Emp – 2

Elm – 1

2014 Totals

January 1st – December 31st

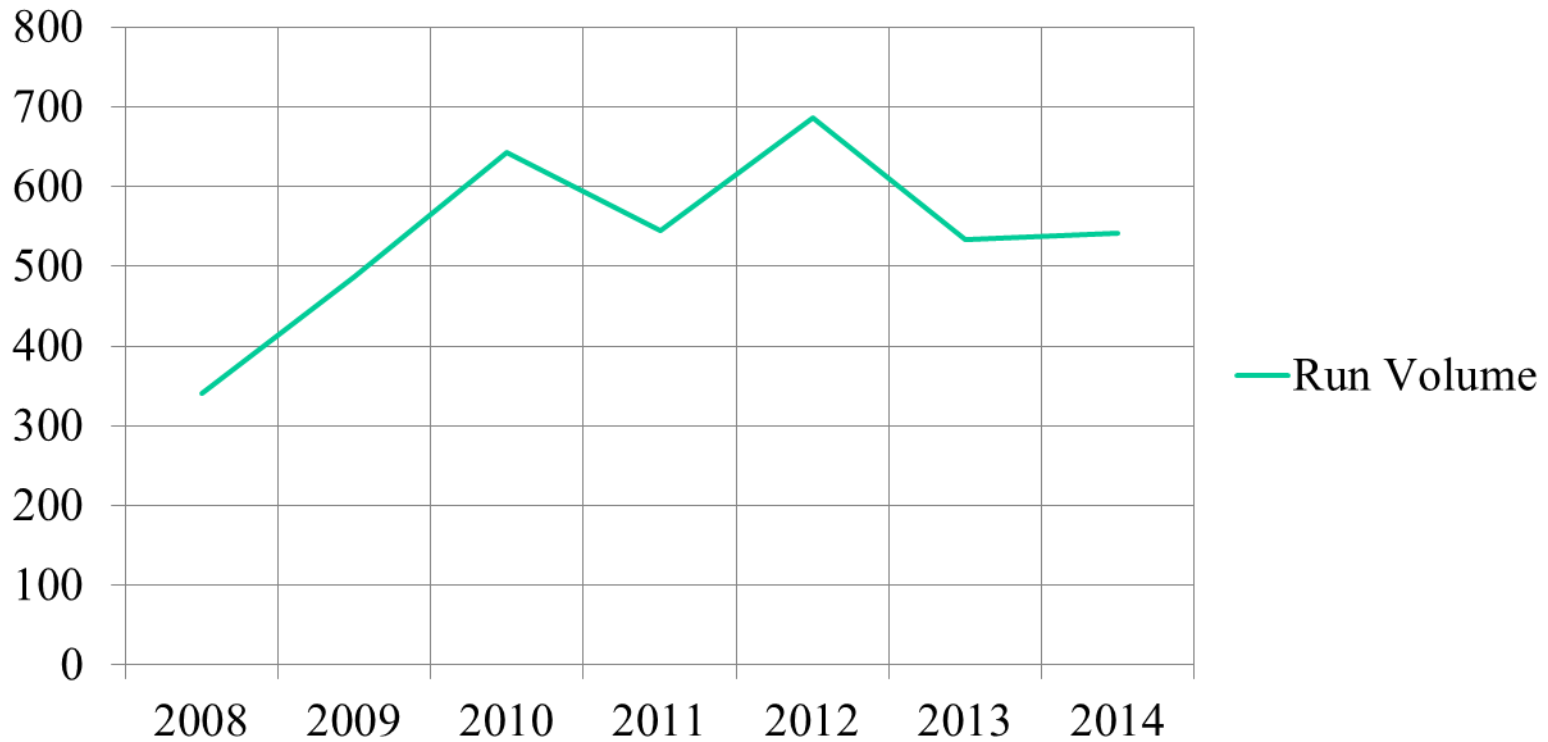
Fire Stats

- 132 Total Fire Runs
 - 91 Day Shift Runs
 - 41 Night Shift Runs
 - Avg. Dispatch to Enroute – 1.51 min.
 - Avg. Dispatch to Onscene – 10.86 min.
 - Avg. Distance – 4.4 Miles
 - 16 Structure Fires
 - 3 Vehicle Fires
 - 8 Brush/Wildland Fires
 - 1 Controlled Bomb Explosion
 - 2 Medical Assists
 - 42 Vehicle Accidents
 - 5 with Extrication
 - 1 Search and Rescues
 - 25 Hazardous Conditions
 - 3 Gas Leaks/Fuel Spills
 - 6 Service Calls
 - 5 Good Intent Calls
 - 20 False Alarms
- | | |
|----------|-----------|
| Cle – 28 | Kas – 35 |
| Sol – 33 | Cent – 22 |
| GTC – 9 | Emp – 3 |
| Elm – 1 | Lel – 1 |

Run Volume Chart

Total 2014 Runs: 542

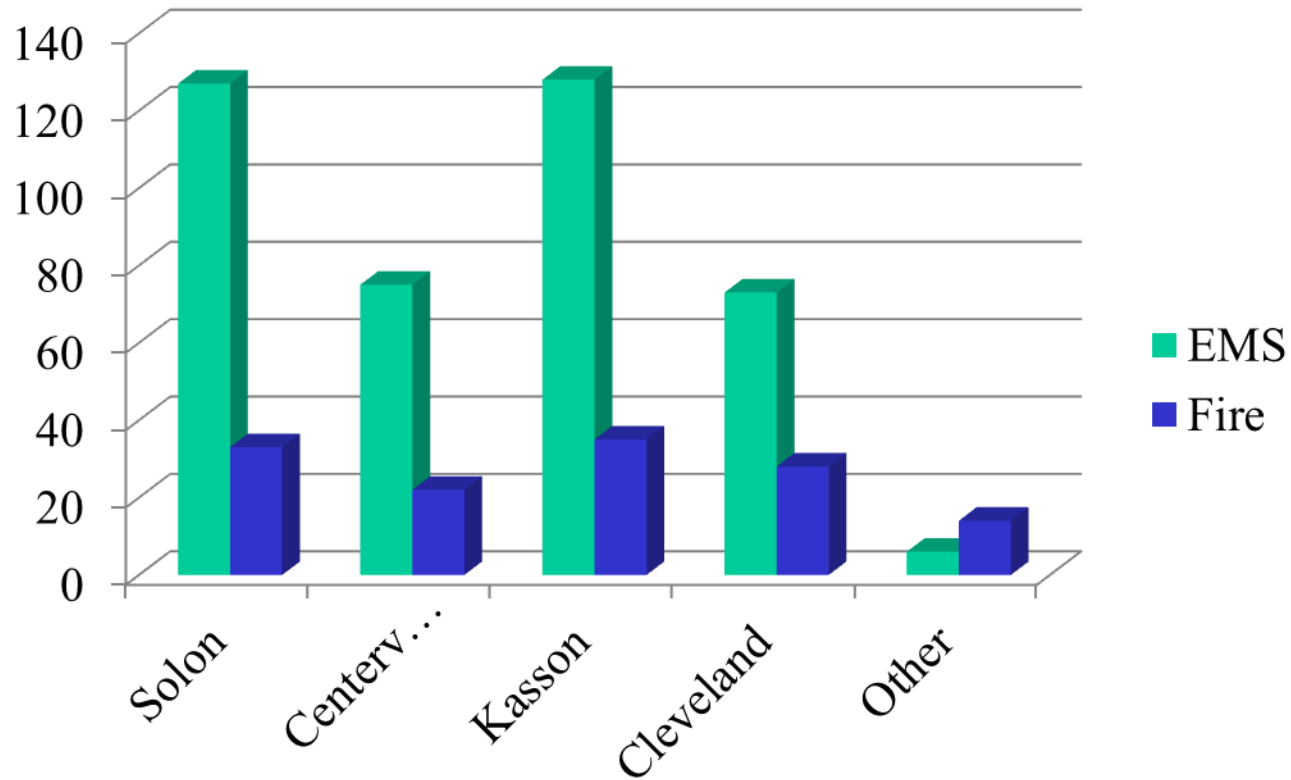
Run Volume



2014

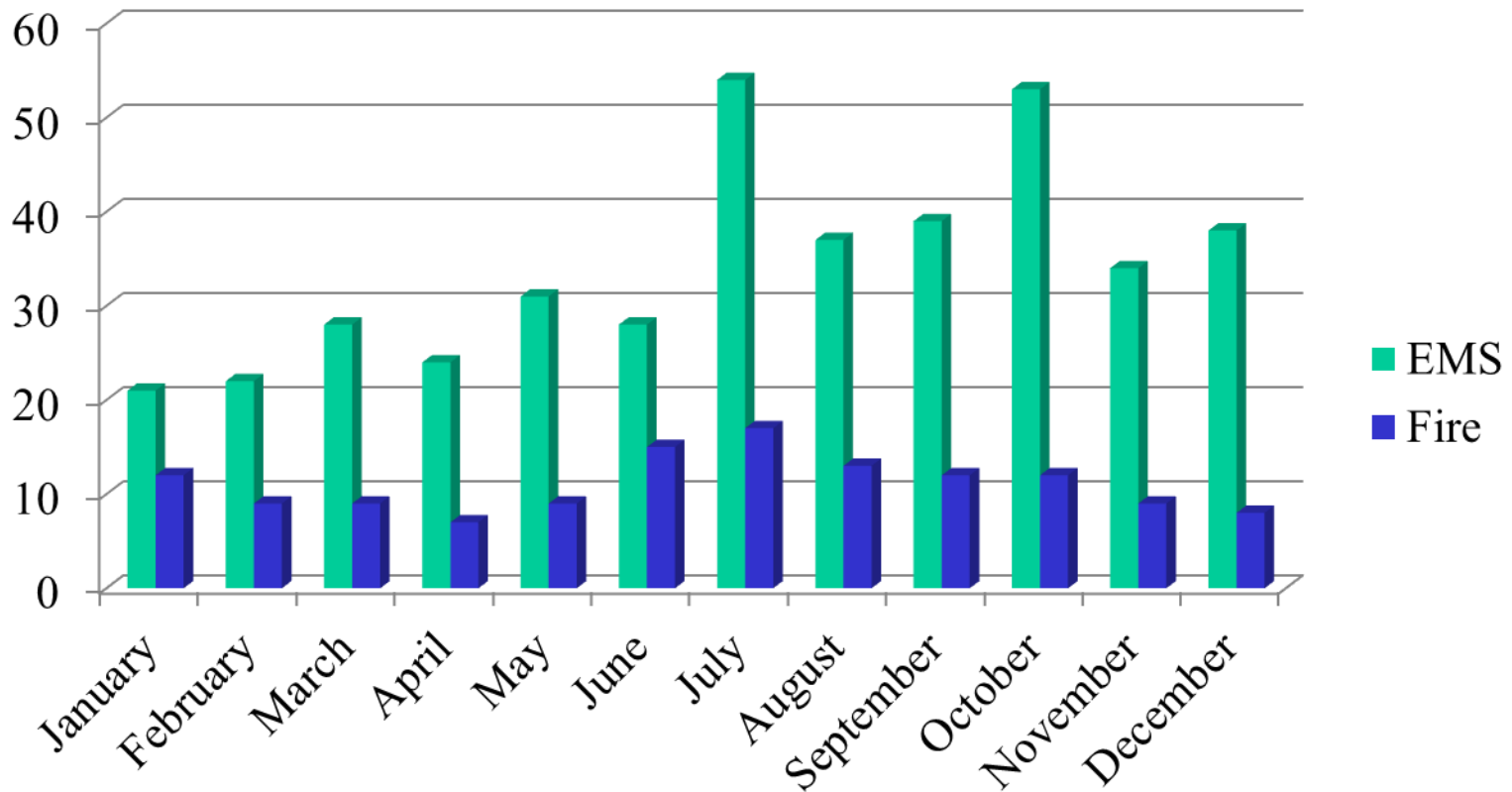
Total Runs per Township

January 1st – December 31st, 2014



Monthly Call Volume

January 1st – December 31st, 2014



2014