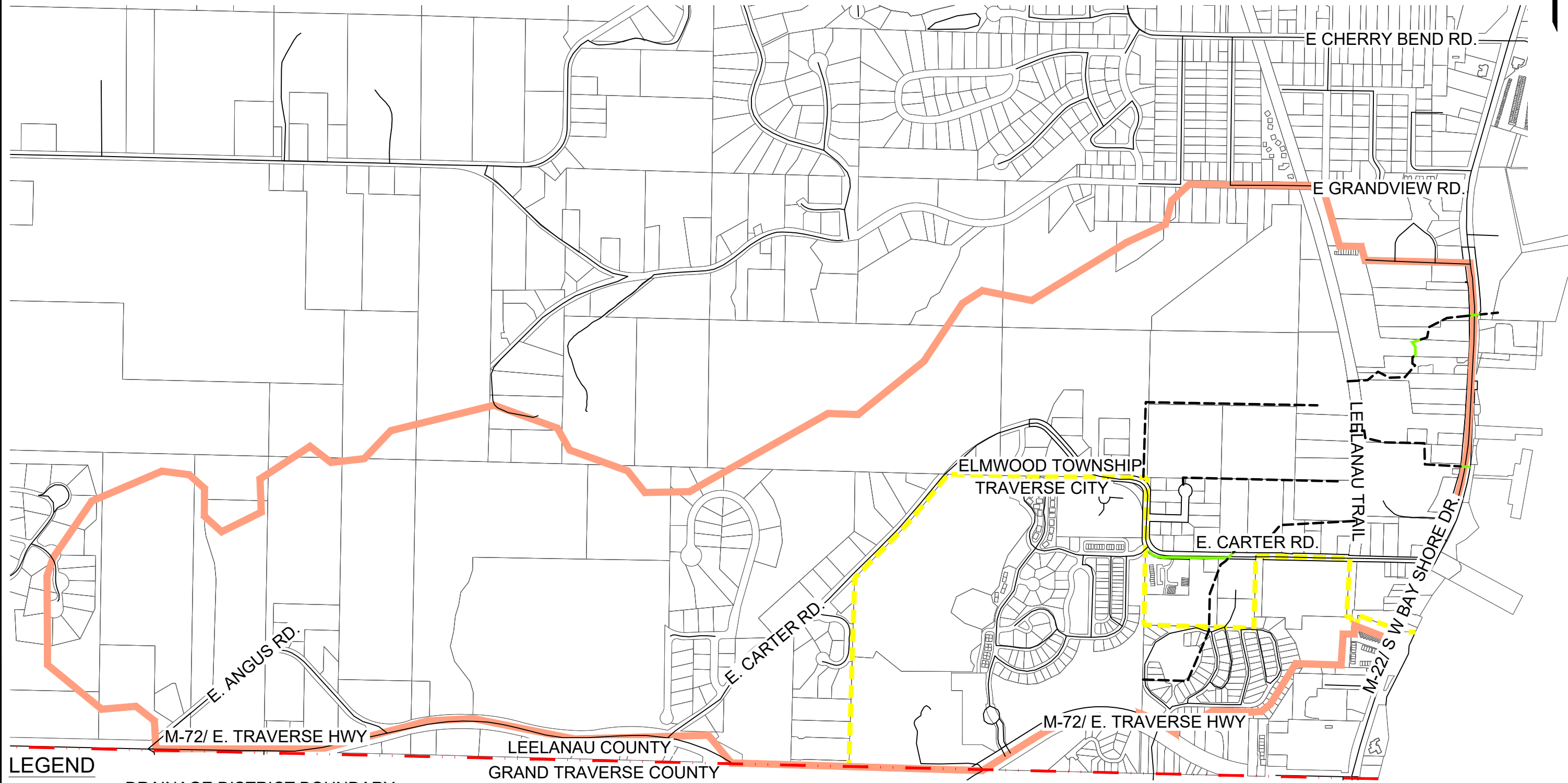


ELMWOOD TOWNSHIP DRAIN #1 DRAINAGE DISTRICT BOUNDARY



LEGEND

- DRAINAGE DISTRICT BOUNDARY
- - - CORPORATE LIMITS
- - - COUNTY LINE
- ROADS
- PARCEL BOUNDARIES
- EXISTING ROUTE & COURSE
- - - EXISTING WATERCOURSES

TOTAL DRAINAGE DISTRICT AREA: 908 ACRES
 AREA WITHIN ELMWOOD TOWNSHIP: 730 ACRES
 AREA WITHIN TRAVERSE CITY: 178 ACRES