

# Cedar Fire Department



2013 Run Statistics and Analysis  
January 1<sup>st</sup> – December 31<sup>st</sup>, 2013

January 1<sup>st</sup> – December 31<sup>th</sup>  
EMS/FIRE

Total EMS Runs and Fire Runs

Prepared by: Tim Johnson

2013

# Organizational Chart of Statistics

- Monthly Reports are comprised of
  - Total EMS/Fire Runs
    - Total Night and Daytime runs
    - Total of BLS runs and ALS runs
    - Number of Ambulance Transports
    - Total calls per township
    - Types of Fire Runs

# January EMS/Fire Statistics

- 28 EMS Runs

- 21 Day Shift runs
- 7 Night Shift runs

6 ALS Intercepts

22 BLS Runs

14 Ambulance Transports

Cle – 3

Kass – 6

Sol – 16

Cent – 3

- 10 Fire Runs

- 7 Day Shift Runs
- 3 Night Shift Runs

- 1 Hazardous Condition
- 1 Gas Leak
- 6 Vehicle Accident
- 2 Structure Fire

Cle – 2

Kass – 1

Sol – 6

Cent – 0

GTC – 1

# February EMS/Fire Statistics

- 26 EMS Runs

- 21 Day Shift Runs
- 5 Night Shift Runs

7 ALS Intercepts

19 BLS Runs

9 Ambulance Transports

Cle – 7

Kass – 11

Sol – 6

Cent – 2

- 16 Fire Runs

- 10 Day Shift Runs
- 6 Shift Night Runs

- 1 Medical Assist
- 7 Vehicle Accidents
- 4 Structure Fires
- 1 Vehicle Fire
- 1 C.O. Alarm
- 1 Hazardous Condition
- 1 Cancelled enroute

Cle – 2

Kass – 8

Sol – 3

Cent – 1

G.A. – 1

Almira – 1

# March EMS/Fire Statistics

- 29 EMS Runs

- 17 Day Shift Runs
- 12 Night Shift Runs

10 ALS Intercepts

20 BLS Runs

14 Ambulance Transports

Cle – 12

Kass – 8

Sol – 4

Cent – 5

- 10 Fire Runs

- 4 Day Shift Runs
- 6 Night Shift Runs

- 1 Structure Fire

- 1 Gas Leak

- 4 False Alarms

- 3 Vehicle Accidents

- 1 Brush Fire

Cle – 5

Kass – 0

Sol – 2

Cent – 2

Elm – 1

# April EMS/Fire Statistics

- 22 EMS Runs
  - 10 Day Shift Runs
  - 12 Night Shift Runs
- 8 ALS Intercepts
- 14 BLS Runs
- 13 Ambulance Transports

Cle – 7      Kass – 6  
Sol – 3      Cent – 6

- 7 Fire Runs
  - 4 Day Shift Runs
  - 3 Night Shift Runs

1 - Structure Fire  
1 - Public Service  
3 - Hazardous Condition  
1 - Gas Leak  
1 - Vehicle Accident

Cle – 1      Kass – 3  
Sol – 0      Cent – 2  
GTC – 1

# May EMS/Fire Statistics

- 31 EMS Runs
  - 18 Day Shift Runs
  - 13 Night Shift Runs
- 4 ALS Intercepts
- 27 BLS Runs
- 11 Ambulance Transports

Cle – 4      Kass – 3  
Sol – 17      Cent – 7

- 7 Fire Runs
  - 4 Day Shift Runs
  - 3 Night Shift Runs
  - 4 Vehicle Accidents
  - 3 Grass/Wildland Fires
- Cle – 0      Kass – 2
- Sol – 2      Cent – 3



# June EMS/Fire Statistics

- 32 EMS Runs
  - 18 Day Shift Runs
  - 14 Night Shift Runs
- 13 ALS Intercepts
- 19 BLS Runs
- 19 Ambulance Transports

Cle – 12      Kass – 10

Sol – 8      Cent – 1

G.A. – 1

- 6 Fire Runs
  - 4 Day Shift Runs
  - 2 Night Shift Runs
- 1 Smoke Investigation
- 1 Power Line Down
- 1 Vehicle Accidents
- 1 Road Hazard
- 2 Smoke/CO Alarms

Cle – 4      Kass – 1

Sol – 1      Cent – 0

# July EMS/Fire Statistics

- 31 EMS Runs

- 21 Day Shift Runs
- 10 Night Shift Runs

8 ALS Intercepts

23 BLS Runs

16 Ambulance Transports

Cle – 6

Kass – 5

Sol – 13

Cent – 7

- 9 Fire Runs

- 5 Day Shift Runs
- 4 Night Shift Runs

- 3 Structure Fires
- 2 Vehicle Accidents
- 3 False Alarms
- 1 Public Service

Cle – 1

Kass – 3

Sol – 4

Cent – 1

# August EMS/Fire Statistics

- 41 EMS Runs

- 16 Day Shift Runs
- 25 Night Shift Runs

11 ALS Intercepts

30 BLS Runs

20 Ambulance Transports

Cle – 12      Kass – 7

Sol – 14      Cent – 8

- 16 Fire Runs

- 4 Day Shift Runs
- 12 Night Shift Runs

- 1 Search and Rescue
- 2 Smoke Investigations
- 2 False Alarms
- 5 Vehicle Accidents
- 1 Controlled Burn
- 1 Brush Fire
- 4 Hazardous Conditions

Cle – 7      Kass – 2

Sol – 3      Cent – 3

G.A. – 1

# September EMS/Fire Statistics

- 40 EMS Runs
    - 24 Day Shift Runs
    - 16 Night Shift Runs
  - 11 ALS Intercepts
  - 29 BLS Runs
  - 21 Ambulance Transports
- Cle – 10      Kas – 16
- Sol – 10      Cent – 2
- Lel – 2

- 5 Fire Runs
  - 3 Day Shift Runs
  - 2 Night Shift Runs
- 1 Medical Assist
- 1 False Alarm
- 2 Vehicle Accident
- 1 Gas Spill

Cle – 1      Kas – 1

Sol – 1      Cent – 0

# October EMS/Fire Statistics

- 47 EMS Runs

- 29 Day Shift Runs
- 18 Night Shift Runs

9 ALS Intercepts

38 BLS Runs

13 Ambulance Transports

Cle – 6

Kas – 26

Sol – 9

Cent – 6

- 13 Fire Runs

- 8 Day Shift Runs
- 5 Night Shift Runs

- 4 Hazardous Condition
- 2 Structure Fire
- 1 False Alarm
- 3 Vehicle Accident
- 2 Grass/Wildland Fire
- 1 Vehicle Fire

Cle – 4

Kas – 4

Sol – 2

Cent – 2

GTC – 1

# November EMS/Fire Statistics

- 45 EMS Runs

- 25 Day Shift Runs
- 20 Night Shift Runs

12 ALS Intercepts

26 BLS Runs

18 Ambulance Transports

Cle – 4      Kas – 16

Sol – 15      Cent – 10

- 17 Fire Runs

- 12 Day Shift Runs
- 5 Night Shift Runs

- 1 Outside Equipment Fire
- 10 Vehicle Accidents
- 3 Hazardous Condition
- 2 Structure Fire
- 1 Rubbish/Wildland Fire

Cle – 1      Kas – 7

Sol – 5      Cent – 3

GTC – 1

# December EMS/Fire Statistics

- 32 EMS Runs
  - 23 Day Shift Runs
  - 9 Night Shift Runs
- 9 ALS Intercepts
- 23 BLS Runs
- 15 Ambulance Transports

Cle – 5      Kas – 10  
Sol – 10     Cent – 7

- 13 Fire Runs
  - 10 Day Shift Runs
  - 3 Night Shift Runs
- 1 Structure Fire
- 1 Gas Leak
- 7 Vehicle Accidents
- 1 Public Service
- 1 Animal Rescue
- 1 False Alarm
- 1 Medical Assist

Cle – 0      Kas – 4  
Sol – 6      Cent – 3

# 2013 Totals

January 1<sup>st</sup> – December 31<sup>st</sup>

## EMS Stats

- 404 EMS Runs
    - 243 Day Shift Runs
    - 161 Night Runs
  - 296 Basic Runs
  - 108 ALS Runs
  - 183 Total Transports
    - 167 Transports for 891
    - 16 Transports for 892
  - 10,948 Total Mileage for 891
  - 1,773 Total Mileage for 892
- Cle – 85      Kass – 124  
Sol – 128     Cent – 64  
G.A. – 1      Lel – 2



# 2013 Totals

January 1<sup>st</sup> – December 31<sup>st</sup>

## Fire Stats

- 129 Total Fire Runs
  - 75 Day Shift Runs
  - 54 Night Shift Runs
  
- Cle – 28                      Kas – 36
- Sol – 36                      Cent – 20
- GTC – 5                      G.A. – 2
- Elm – 1                      Alm – 1
  
- 16                      Structure Fires
- 2                      Vehicle Fires
- 9                      Brush/Wildland Fires
- 1                      Outside Equipment Fire
- 2                      Medical Assists
- 51                      Vehicle Accidents
  - 3 with Extrication
  - 15 with Injuries
  - 33 with No Injuries
- 2                      Search and Rescues
- 19                      Hazardous Conditions
- 8                      Gas Leaks/Fuel Spills
- 5                      Service Calls
- 2                      Good Intent Calls
- 12                      False Alarms

# Total 2013 Runs

# 533

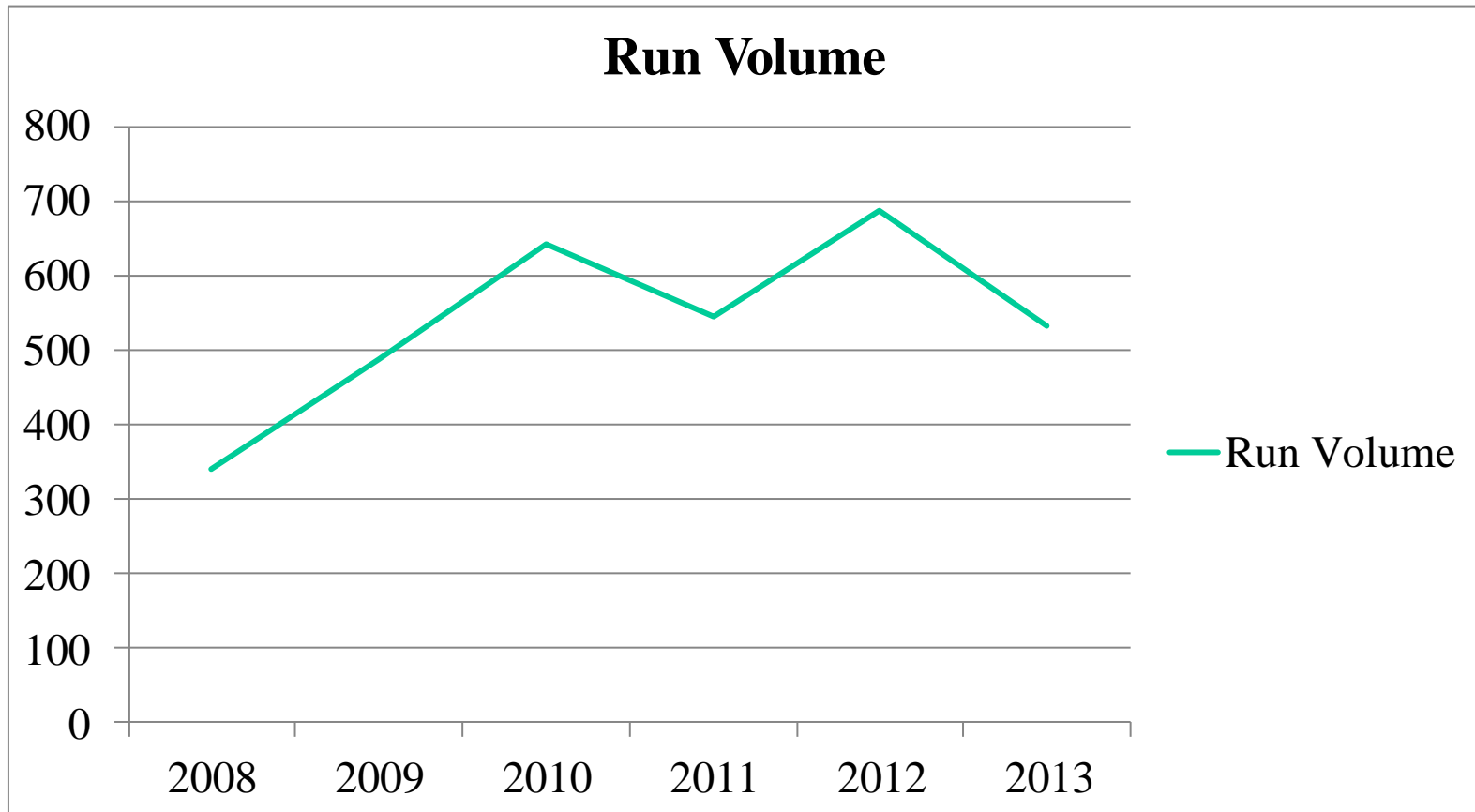
## Fire Statistics Cont.

- 22,300 Gallons of Water Used.
- 10.99 min. average response time.
- 3.1 min. average dispatch to enroute.
- 3 miles was average distance to scene.
- 6 - Mutual Aid was given
- 12 - Mutual Aid received
- Est. \$176,200 in fire property loss.

## Apparatus Statistics

Apparatus	Miles	Times Used
Engine 811	531.5	100
Tanker 821	44.4	9
Tanker 822	275.2	51
Aerial 831	133.9	24
Brush 841	64.7	11
S.Mobile 882	8	2
Rescue 891	543.5 (Fire Only)	82 (Fire Only)
Rescue 892	81.5 (Fire Only)	18 (Fire Only)

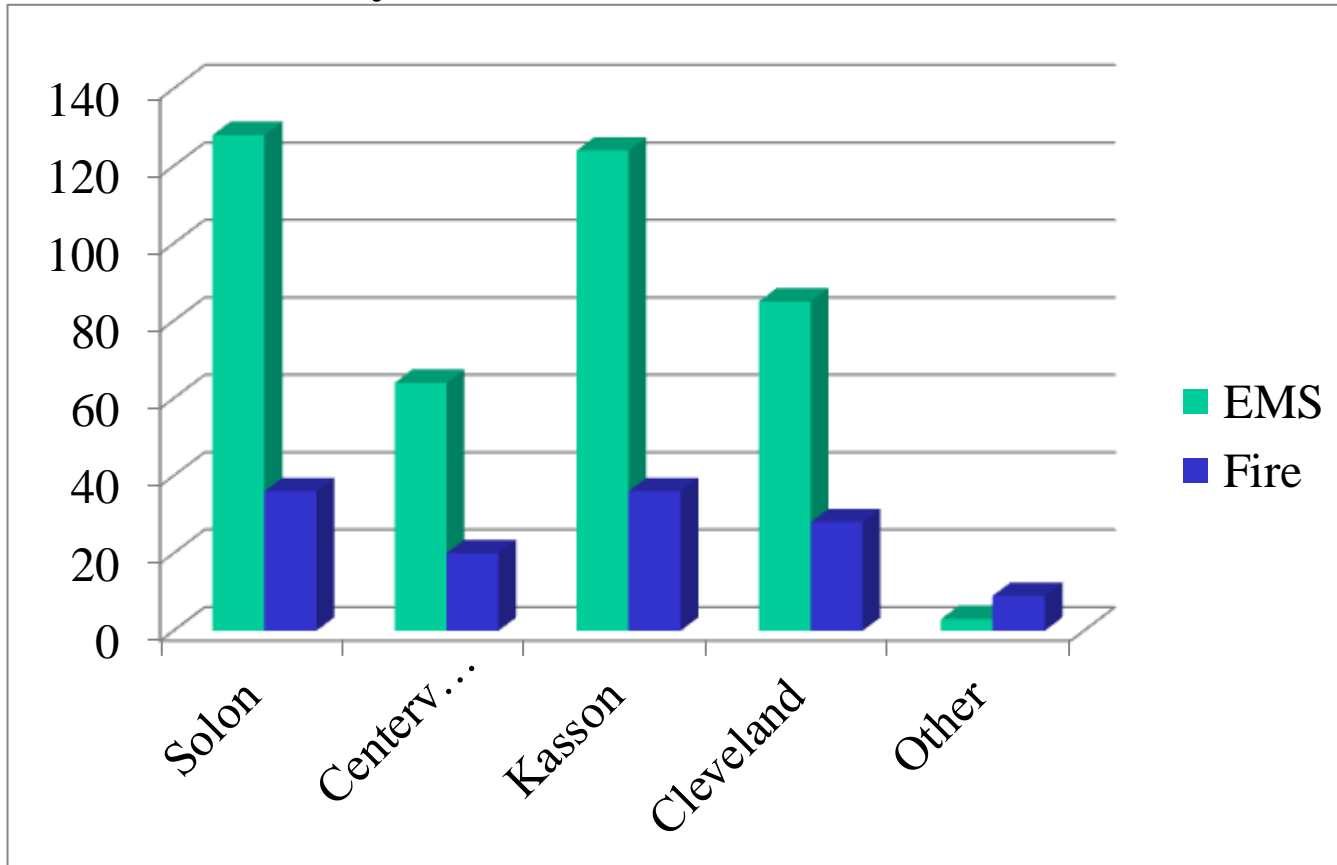
# Run Volume Chart



2013

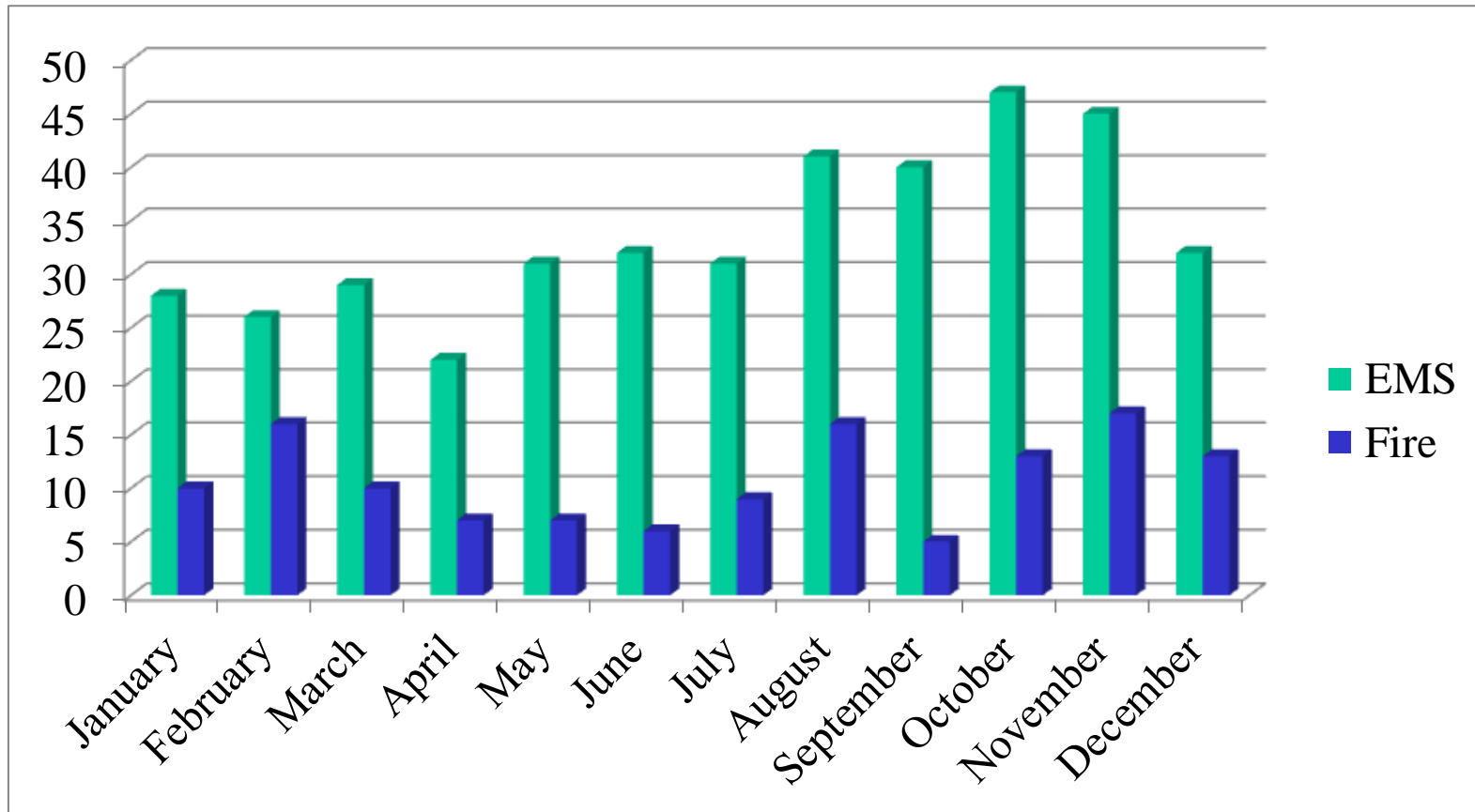
# Total Runs per Township

January 1<sup>st</sup> – December 31<sup>st</sup>, 2013



# Monthly Call Volume

January 1<sup>st</sup> – December 31<sup>st</sup>, 2013



2013