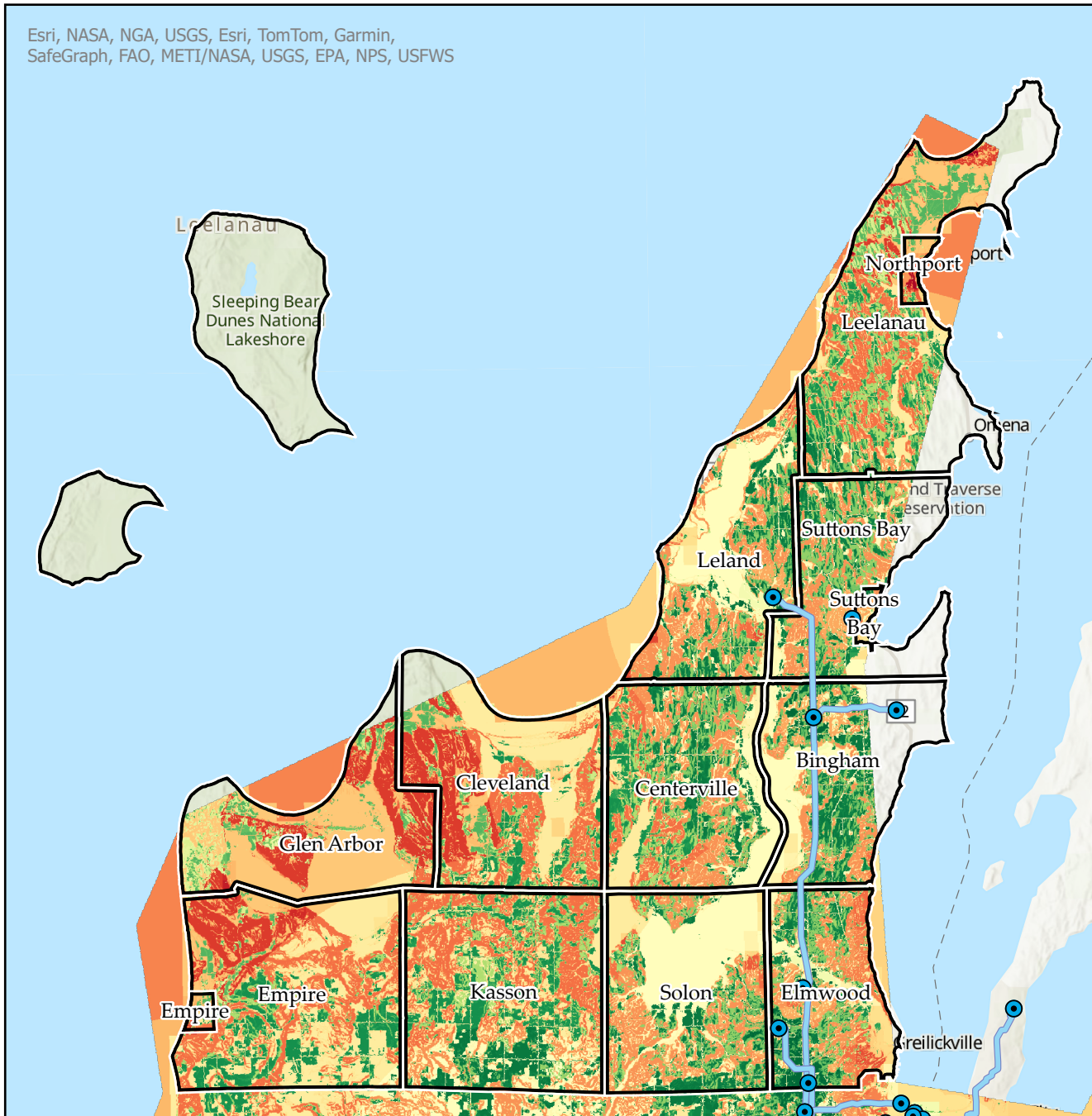


Esri, NASA, NGA, USGS, Esri, TomTom, Garmin,
SafeGraph, FAO, METI/NASA, USGS, EPA, NPS, USFWS

Solar Suitability Map

Leelanau County



- Substations
- Transmission Lines



Less Suitable

More Suitable

*This map is based on the resource suitability model developed by the Renewable Energy Academy team.

Some areas on the map that are currently not covered due to data limitations.

(See Renewable Energy Academy webpage for more information.)

It is intended to provide a general indication of potential suitability for resource use. However, this map does not guarantee the feasibility, approval, or outcome of any development or non-development activities.