

Security Flaws in Leelanau County election computer software.

- 1 Clint Curtis Arizona State Senate Hearings
Computer Programmer and Lawyer
He wrote first software computer program to rig elections
- 2 Navid Keshavarz Election Software Whistleblower
CIA - Chief Senior Cyber Security Expert
- 3 University Computer Science Professors and Cyber Science Experts
stating voting software vulnerabilities Hearings / Interviews
- 4 Bureaucrats and Politician on Election software security
Public News Networks
- 5 New Hampshire 2005 Machine Accuracy Demo
Brandon House-World Wide Report
- 6 Dominion CEO denial of Internet Connectivity and Dominion Sale
Demonstration. 2021 Cyber Symposium

Handouts:

Court document of out of date certification of machine certifier

Michigan Election Security Advisory Commission

Mesa Forensic report on deleted files after software update

Edison Reporting of 2022 Illinois and Michigan live election reporting

1. The first part of the document is a list of names and addresses.

2. The second part is a list of names and addresses.

3. The third part is a list of names and addresses.

4. The fourth part is a list of names and addresses.

5. The fifth part is a list of names and addresses.

6. The sixth part is a list of names and addresses.

7. The seventh part is a list of names and addresses.

8. The eighth part is a list of names and addresses.

9. The ninth part is a list of names and addresses.

10. The tenth part is a list of names and addresses.

11. The eleventh part is a list of names and addresses.

12. The twelfth part is a list of names and addresses.

13. The thirteenth part is a list of names and addresses.

14. The fourteenth part is a list of names and addresses.

15. The fifteenth part is a list of names and addresses.

16. The sixteenth part is a list of names and addresses.

17. The seventeenth part is a list of names and addresses.

18. The eighteenth part is a list of names and addresses.

19. The nineteenth part is a list of names and addresses.

20. The twentieth part is a list of names and addresses.



Michigan Election Security Advisory Commission

Report and Recommendations

October 2020

governments. Illinois has established a cyber navigator program to assist local jurisdictions in creating defenses and responding to cyber threats.

The Advisory Commission recommends that security staff for the Secretary of State share information, coordinate effort, strengthen federal partnerships, and otherwise work with counterparts across county and local governments to determine the most effective means of improving IT security through the deployment of election security resources, including federal election security grant funding.²

4. Cultivate mature software engineering security practices

The Advisory Commission discussed additional methods by which the Secretary of State could test and improve data security infrastructure on an ongoing basis. The Commission identified several opportunities for improvement.

a. **Regularly perform source code security audits or reviews, and penetration testing.** *The Advisory Commission recommends that the Secretary of State commission both source code security audits and penetration testing on a frequent and regular basis, at a minimum annually.*

The state has in the past commissioned a vendor to conduct some penetration testing, but not on a regular schedule. The Advisory Commission recommends that the Secretary of State conduct additional testing, do so at regular intervals, and prioritize fixing any issues discovered during such audits and testing.

b. **Maximize leverage of resources from federal and state partners, civil society, and industry.** *The Advisory Commission recommends that the Secretary of State build on existing relationships to expand security infrastructure testing and*

² See Department of Homeland Security, "Election Infrastructure Security Funding Considerations" (June 2018), <https://www.dhs.gov/sites/default/files/publications/Election%20Infrastructure%20Security%20Funding%20Considerations%20Final.pdf>.

IN THE UNITED STATES DISTRICT COURT FOR THE
WESTERN DISTRICT OF MICHIGAN
GRAND RAPIDS DIVISION

JASON ICKES, voter

KEN BEYER, voter

**MACOMB COUNTY REPUBLICAN
PARTY by its officers of the Executive
Committee,**

**DONNA BRANDENBURG, US Tax
Payers Candidate for the 2022 Governor of
Michigan,**

**ELECTION INTEGRITY FUND AND
FORCE, a Michigan non-profit
corporation, AND**

**SHARON OLSON, in her official capacity
as the Clerk of Irving Township Barry
County**

Plaintiffs,

v.

**GRETCHEN WHITMER, in her official
capacity as the Governor of Michigan, and**

**JOCELYN BENSON, in her official
capacity as Michigan Secretary of State**

Defendants.

Civil Action No. : _____

JURY DEMAND

**Daniel J. Hartman (P52632)
Attorney for Plaintiffs
PO BOX 307
Petoskey, MI 49770
(231) 348-5100
Danjh1234@yahoo.com**

33. Pursuant to the EAC website, forty-eight (48) counties use Dominion's D-Suite 5.5. <https://www.eac.gov/voting-equipment/system-certification-process> (last visited August 31, 2022).

34. The Dominion Election Management system was used in more than 57% of the Michigan counties

35. Pursuant to the Michigan Secretary of State, the Dominion election voting systems used in the November 3, 2020 presidential election were "certified" on November 15, 2019, with an EAC System ID # as follows: DVS-DemSuite5.5-B. Michigan Secretary of State, Certified Vote Tabulating Equipment as of July 22, 2020.

36. The software version that was certified reports as version 5.5-B while the website indicates that the counties were certified for use in version 5.5.

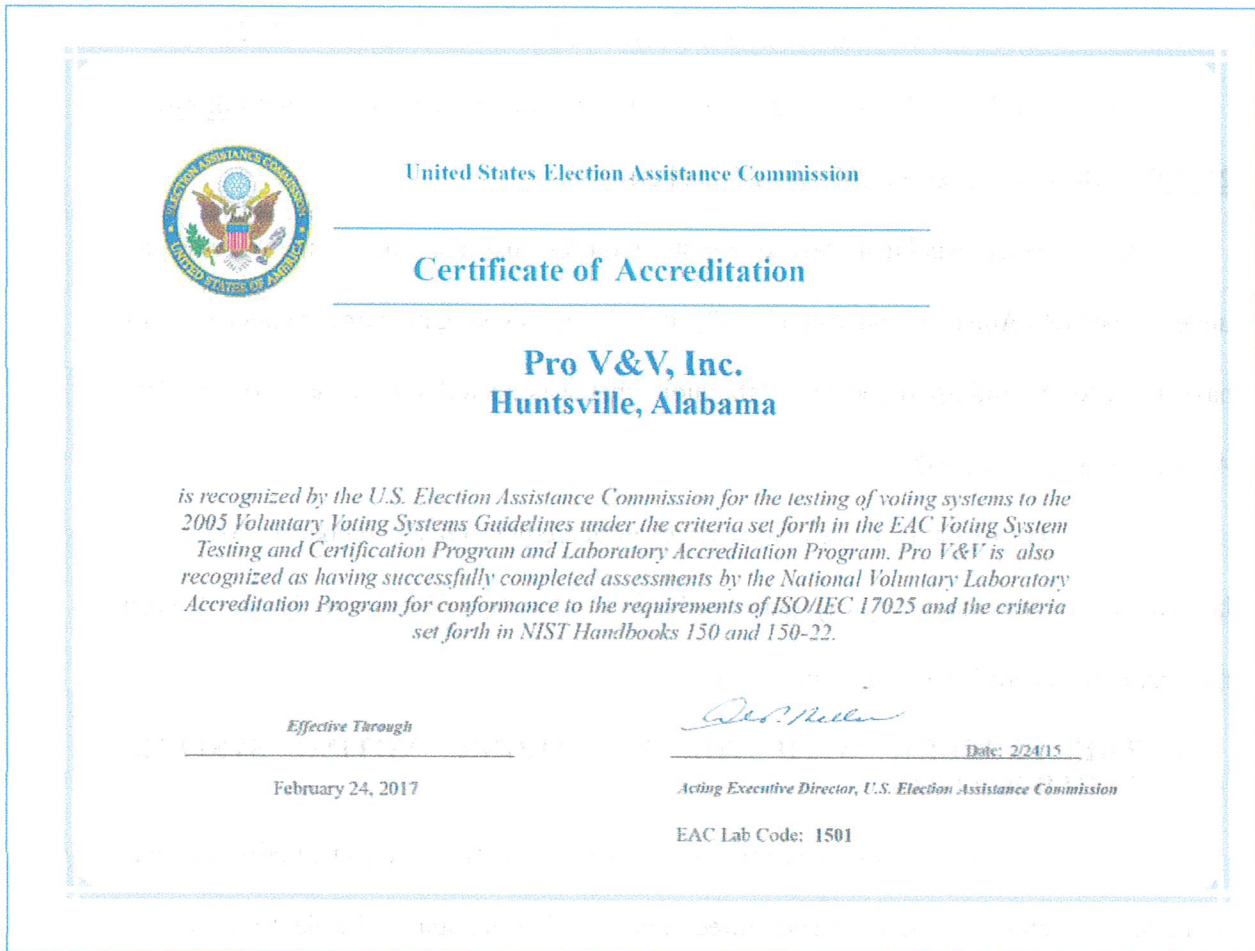
37. Regardless, these forty-eight (48) counties appear to have relied upon the validity of the November 15, 2019 certification and the laboratory that performed the testing.

38. Pursuant to the Michigan Secretary of State, the Dominion election voting systems used in the November 3, 2020 presidential election were "certified" on November 15, 2019, with an EAC System ID # as follows: DVS-DemSuite5.5-B. Michigan Secretary of State, Certified Vote Tabulating Equipment as of July 22, 2020.

ACCREDITATION ISSUE

39. Pursuant to the Michigan Secretary of State's website and hyperlink in the above PDF, DVS-DemSuite5.5 is manufactured by Dominion Voting Systems Corp and the Testing Laboratory was Pro V&V. U.S. Election Assistance Commission, <https://www.eac.gov/voting-equipment/democracy-suite-55> (last visited August 29, 2022).

40. Pursuant to the U.S. Election Assistance Commission's website, Pro V&V received a Certificate of Accreditation on February 24, 2015.



41. There is no evidence of that PRO V and V was recertified.

42. Pursuant to Version 2.0 of the Voting System Test Laboratory Program Manual, which was effective May 31, 2015, "A grant of accreditation is valid for a period **not to exceed two years**." Voting System Test Laboratory Program Manual, p. 39, § 3.8.

43. On November 15, 2019, the Pro V & V Accreditation was lapsed by more than two years.

44. On November 15, 2019, Pro V&V was not accredited by the U.S. Election Assistance Commission. U.S. Election Assistance Commission, <https://www.eac.gov/voting-equipment/voting-system-test-laboratories-vstl/pro-vv> (last visited August 29, 2022).

45. Pro V&V did not receive another Certificate of Accreditation until **January 27, 2021**, which was after the 2020 presidential election.

46. Since Michigan law expressly requires that the “requirements imposed under... the Help America Vote Act of 2002,” the Michigan voting machines or devices must have been tested and approved by a laboratory that was accredited pursuant to the Help America Vote Act of 2002

47. However, Pro V&V was not even accredited on November 3, 2020, as a laboratory in addition to having expired accreditation on the day of November 15, 2019, when they claimed to certify the Dominion system

1. THE PROBLEM WITH THE ELECTRONIC VOTING SYSTEMS CERTIFICATION

48. The US Election Assistance Commission certifies electronic voting systems to the federal standards and has issued three versions of the standards for electronic voting systems which are version 1.0; 1.1 and 2.0. [Certified Voting Systems | U.S. Election Assistance Commission \(eac.gov\)](#)

49. The electronic voting systems include the hardware and software that is used as described in the Michigan Election code which includes the three vendors each offering different types of tabulators and the election management system software.

50. The requirement to also comply with the additional requirements of the Help America Vote Act of 2002 was passed into Michigan law on October 29, 2002.



SEP 17 2021

**CONFIDENTIAL LEGAL DOCUMENTS
EXEMPT FROM COLORADO OPEN RECORDS ACT**

Hon. Janet Rowland, Chair, Board of County Commissioners
Scott McInnis, County Commissioner
Cody Davis, County Commissioner
544 Rood Avenue
Grand Junction, CO 81501

RE: Forensic Report No. 1 on EMS Server Images

Dear Commissioners:

Enclosed is the first report from the cybersecurity experts who have analyzed thoroughly the two forensic images of the drive of the DVS Democracy Suite Election Management System in my office which we used for the management of the 2020 election. Because the report documents a substantial amount of data destruction during the May 25 "Trusted Build" conducted by the Secretary of State's office and the vendor, I wanted to get this in your hands immediately.

I just received this report today. From my review of the executive summary, it does appear that my concerns were more than justified. As you know, the legal duty to preserve election records falls solely to me and my office. "Extensive" amounts of data required to be preserved were instead destroyed, and done in a way that was totally beyond my control or knowledge. Among other things, these deletions would preclude a forensic audit of the last election. Thanks to the pre-Trusted Build image I had commissioned in May, these data have been preserved, in full compliance with my obligations under federal and state law, preserving the integrity of our county's election record archive and permitting a forensic audit if one were conducted.

According to this report, the forensic examination has determined that this system and procedures "cannot meet the certification requirements of the State of Colorado and should not have been certified for use in the state." Obviously, this is highly relevant to any decision whether to continue to use these systems in our county. You already know of my opposition to continued use of these systems, which prevent me from discharging the duties of my office and the requirements of the law.

The experts conducting the forensic analysis are apparently issuing additional reports in the near future, and of course I will promptly deliver these to you. In the meantime, I would welcome a discussion of these findings and the proper course forward for our county to preserve the integrity of our elections.

Very truly yours,

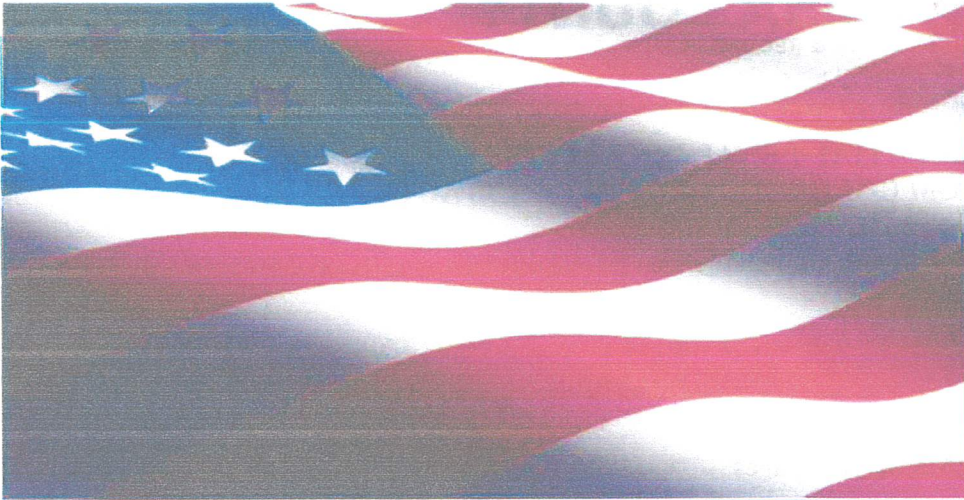
Tina M. Peters

Tina M. Peters

Mesa County Clerk & Recorder

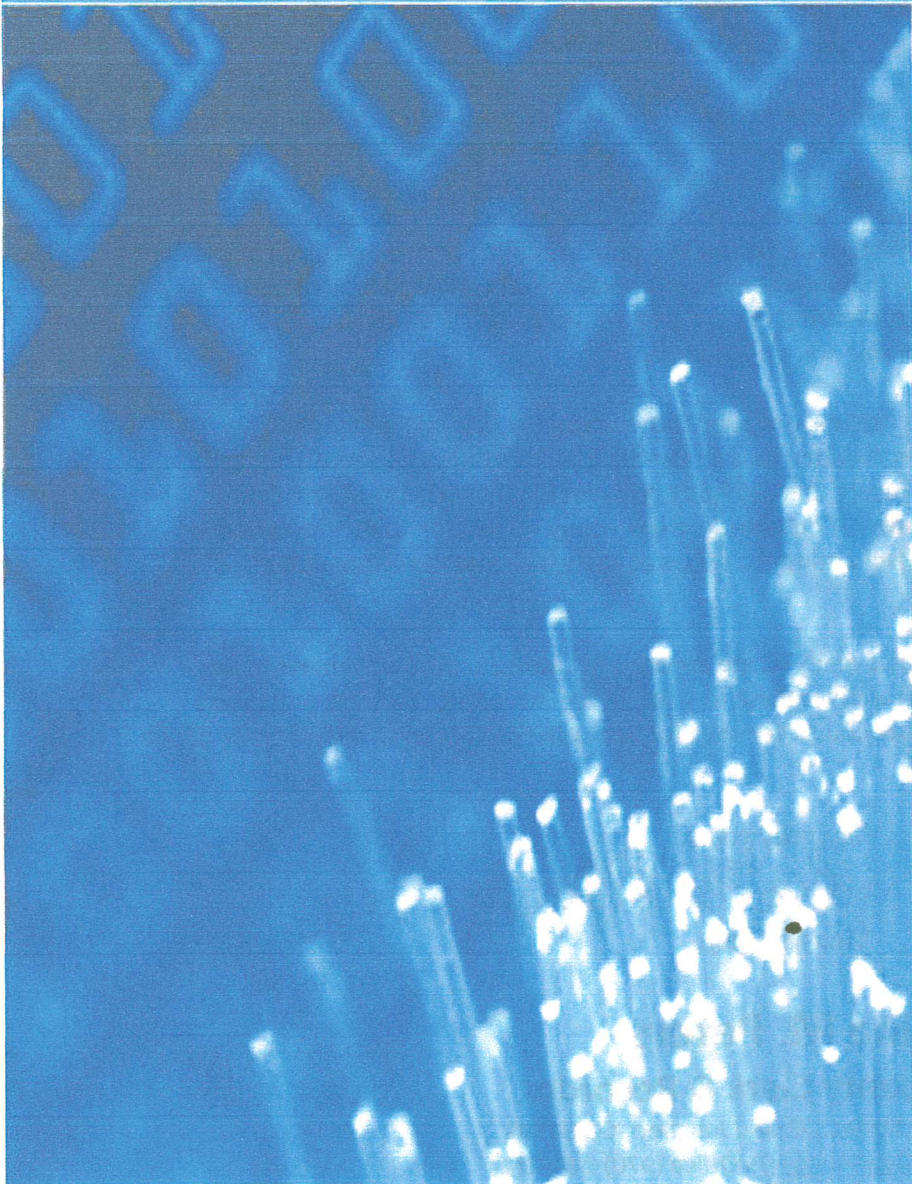
200 S. Spruce Street | Grand Junction, CO 81501

Tina.Peters@MesaCounty.US Office (970) 244-1714



**Mesa County
Colorado
Voting Systems**

**Report #1 with
Forensic Examination and Analysis**



September 2021

Mesa County, Colorado, Voting Systems

**Report #1 with
Forensic Examination and Analysis**

15 September 2021

EXECUTIVE SUMMARY

This report documents initial findings in an ongoing forensic examination of the voting systems of Mesa County, Colorado, used in the November, 2020 General Election. These voting systems represent a portion of overall election systems infrastructure, and this report is limited to the findings of an ongoing investigation. The findings in this report were prepared by the cyber forensic expert retained to advise the County Clerk pursuant to her duties as the county's Chief Election Official as part of the impacted parties' legal team.

Federal law requires the preservation of election records – which includes records in electronic or digital form – for twenty-two months after an election. Colorado law requires the preservation of election records for an additional three months beyond the Federal requirement. The obligation to ensure the integrity of elections and that all election records are preserved pursuant to federal and state law falls to the elected Clerk & Recorder. This report, the first of several, is based on examination of the data obtained from forensic images of the Dominion Voting System EMS server last used in Mesa County for the November, 2020, election, images taken in furtherance of the preservation requirements of federal and state law. Based upon information received by the Clerk's office from various sources in early 2021, the Clerk became concerned that the voting system modifications might jeopardize these preservation and other legal requirements under the responsibility of the County Clerk. For this reason the Clerk ensured a full backup of election records from the County voting systems, both before and after the software modification performed by the vendor and the Secretary of State on May 25-26, 2021, just six months after the November, 2020, election.

Forensic examination¹ found that election records, including data described in the Federal Election Commission's 2002 Voting System Standards (VSS) mandated by Colorado law as certification requirements for Colorado voting systems, have been destroyed on Mesa County's voting system, by the system vendor and the Colorado Secretary of State's office. Because similar system modifications were reportedly performed upon county election servers across the state, it is possible, if not likely, that such data destruction in violation of state and federal law has occurred in numerous other counties.

The extent and manner of destruction of the data comprising these election records is consequential, precluding the possibility of any comprehensive forensic audit of the conduct of any involved election. This documented destruction also undermines the conclusion that these Colorado voting systems and accompanying vendor and Colorado Secretary of State-issued procedures could meet the requirements of Colorado and Federal law, and consequently vitiates the premise of the Colorado Secretary of State certification of these systems for use in Colorado.

Two backup images, using forensic imaging methods, were obtained from the Dominion Voting Systems (DVS) Democracy Suite (D-Suite) Election Management System (EMS) Standard Server in Mesa County, Colorado. The first image was made of that EMS Standard Server in the D-Suite 5.11-CO version configuration, as used in the November, 2020 election. The second image was of the configuration of the EMS Standard Server in the D-Suite 5.13 version configuration, following the modification of the EMS Standard Server by a combined team of DVS vendor personnel and Colorado Secretary of State staff. The forensic information provided in this report is presented using screenshots from forensic analysts' systems running industry-standard forensics software tools. The report includes "before" and "after" screenshots from the forensic tool that shows the differences between the two backup images.

The forensic examination found that numerous logfiles had been deleted or overwritten. These logfiles are required to reconstruct the function of and events taking place on the the voting systems, and based upon information

¹ Many individuals and organizations, some public officials, have made recent claims that no audit performed nor examination conducted on elections or computer-based election systems can be legitimate or credible unless the examiners are "election experts" or accredited election auditors. There is no such thing as an "accredited election auditor," nor are there Federal standards or procedures to credential election auditors.

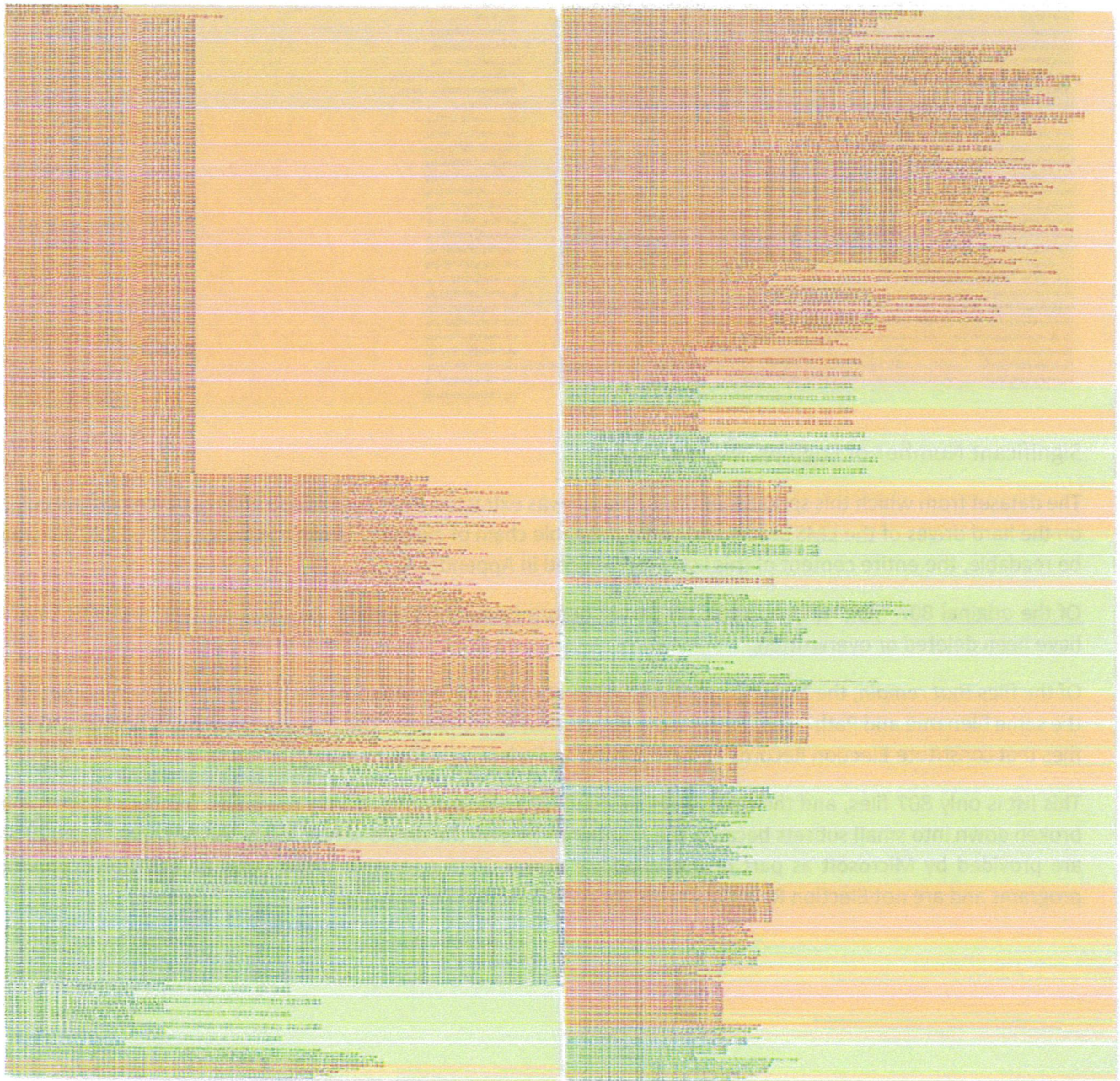
Server List of .log files in Before Image that were Deleted.

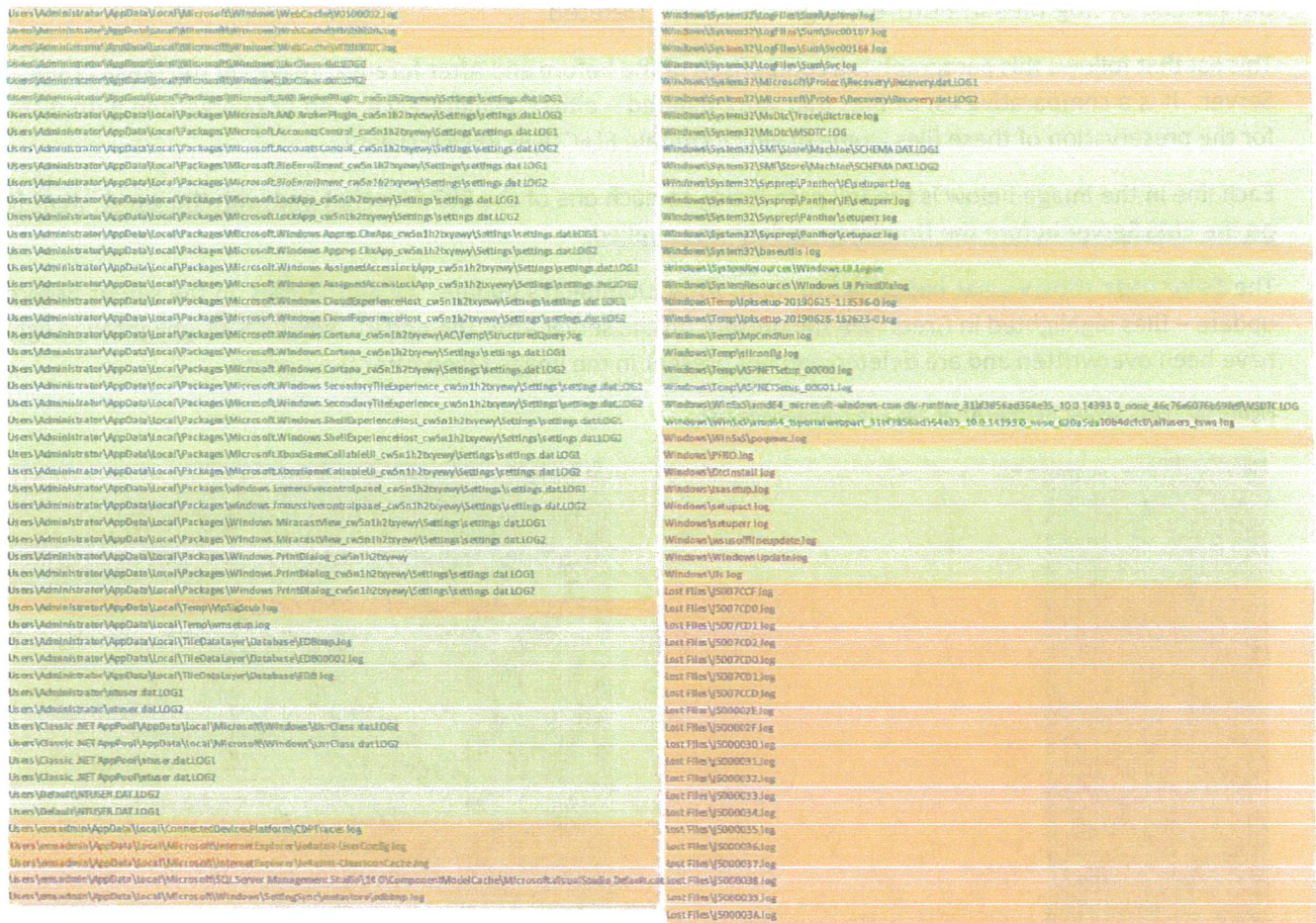
This list that follows this paragraph is a comparison of the Before and After forensic images of the Mesa County EMS Server. It is a comparative list of files that were deleted – either deliberately erased or overwritten with disregard for the preservation of these files, some of which contain ELECTION RELATED data.

Each line in the image below is the full path listing to each one of the 807 files that end with the word ".log" found on the EMS Server before the Dominion update was applied.

The **Color code shows what happened** to them After Dominion's update. **Of all the files** on the server Before the update – files highlighted in Green **are still** present on the server after the update, **while files** highlighted in light red have been overwritten and are deleted and not present in the image taken After the update.

Figure 40 - EMS Server Before/After .log File Comparison List





Significant Number of Logfiles Missing

The dataset from which this spreadsheet was created was extracted from the EnCase images of the original evidence on the hard drives of the EMS Server and had a traceable chain of custody. While the images above are too small to be readable, the entire content of this list is reproduced in Appendix A.

Of the original 807 ".log" files on the EMS Server before Dominion's update, only 302 remain, and 505 ".log" files have been deleted or overwritten.

Of the files that remain, the forensic examination has not yet verified whether the content of these files (which have the same filename and Path – e.g., in the same directories) is unchanged. The files that have been deleted DO include files that constitute Election Records and are subject to Federal and State data retention laws.

This list is only 807 files, and the text size is so small that the content is barely readable. The list of files has been broken down into small subsets because the number of files on the entire server totals 363,321 files, many of which are provided by Microsoft as part of the Windows Server 2016 operating system and its associated application programs and are not Election Related and do not contain actual Election Data.

| | |
|---|---|
| Windows\System32\winevt\Logs\Archive-EMS System-2020-07-01-03-27-07-105.evtx | Windows\System32\winevt\Logs\Microsoft-Windows-Partition%4Diagn |
| Windows\System32\winevt\Logs\Archive-EMS System-2021-04-09-17-04-07-509.evtx | Windows\System32\winevt\Logs\Microsoft-Windows-PerceptionRuntin |
| Windows\System32\winevt\Logs\Archive-EMS System-2021-05-09-07-12-48-391.evtx | Windows\System32\winevt\Logs\Microsoft-Windows-PerceptionSens |
| Windows\System32\winevt\Logs\Archive-EMS System-2020-10-11-00-11-12-292.evtx | Windows\System32\winevt\Logs\Microsoft-Windows-User Control Pan |
| Windows\System32\winevt\Logs\Archive-EMS System-2021-05-15-12-21-57-907.evtx | Windows\System32\winevt\Logs\Microsoft-Windows-Policy%4Operatic |
| Windows\System32\winevt\Logs\Archive-EMS System-2020-11-03-08-03-17-087.evtx | Windows\System32\winevt\Logs\Microsoft-Windows-PowerShell-Desir |
| Windows\System32\winevt\Logs\Archive-EMS System-2021-05-22-18-13-07-673.evtx | FileDownloadManager%4Operational.evtx |
| Windows\System32\winevt\Logs\Archive-EMS System-2020-08-27-17-53-57-312.evtx | Windows\System32\winevt\Logs\Microsoft-Windows-PrintBRM%4Adm |
| Windows\System32\winevt\Logs\Archive-EMS System-2020-09-30-01-16-19-620.evtx | Windows\System32\winevt\Logs\Microsoft-Windows-PrintService%4Ac |
| Windows\System32\winevt\Logs\Archive-EMS System-2021-05-20-19-51-20-073.evtx | Windows\System32\winevt\Logs\Microsoft-Windows-ReadyBoost%4Op |
| Windows\System32\winevt\Logs\Archive-EMS System-2021-05-13-02-24-44-262.evtx | Windows\System32\winevt\Logs\Microsoft-Windows-ReFS%4Operatio |
| Windows\System32\winevt\Logs\Archive-EMS System-2021-05-15-23-57-17-682.evtx | Windows\System32\winevt\Logs\Microsoft-Windows-Regsvr32%4Oper |
| Windows\System32\winevt\Logs\Archive-EMS System-2020-12-08-20-31-15-022.evtx | Windows\System32\winevt\Logs\Microsoft-Windows-RemoteApp and I |
| Windows\System32\winevt\Logs\Archive-EMS System-2020-12-09-21-34-01-652.evtx | Windows\System32\winevt\Logs\Microsoft-Windows-RemoteApp and I |
| Windows\System32\winevt\Logs\Archive-EMS System-2021-02-02-16-11-00-907.evtx | Windows\System32\winevt\Logs\Microsoft-Windows-RemoteDesktopS |
| Windows\System32\winevt\Logs\Archive-EMS System-2020-12-10-17-14-18-337.evtx | Windows\System32\winevt\Logs\Microsoft-Windows-RemoteDesktopS |
| Windows\System32\winevt\Logs\Archive-EMS System-2021-05-17-16-31-18-634.evtx | Windows\System32\winevt\Logs\Microsoft-Windows-RemoteDesktopS |
| Windows\System32\winevt\Logs\Archive-EMS System-2020-12-09-17-35-55-190.evtx | Windows\System32\winevt\Logs\Microsoft-Windows-Resource-Exhaus |
| Windows\System32\winevt\Logs\Archive-EMS System-2020-12-10-17-26-50-697.evtx | Windows\System32\winevt\Logs\Microsoft-Windows-ScmBus%4Certifi |
| Windows\System32\winevt\Logs\Archive-EMS System-2020-12-08-21-07-21-169.evtx | Windows\System32\winevt\Logs\Microsoft-Windows-ScmDisk0101%4C |
| Windows\System32\winevt\Logs\Archive-EMS System-2020-12-09-22-01-49-473.evtx | Windows\System32\winevt\Logs\Microsoft-Windows-SearchUI%4Oper |
| Windows\System32\winevt\Logs\Archive-EMS System-2021-05-18-15-41-56-864.evtx | Windows\System32\winevt\Logs\Microsoft-Windows-Security-Audit-Cc |
| Windows\System32\winevt\Logs\Archive-EMS System-2021-02-09-17-14-16-397.evtx | Windows\System32\winevt\Logs\Microsoft-Windows-Security-Enter pri |
| Windows\System32\winevt\Logs\Archive-EMS System-2021-02-09-17-25-20-742.evtx | Windows\System32\winevt\Logs\Microsoft-Windows-Security-Netlog |
| Windows\System32\winevt\Logs\Archive-EMS System-2021-02-09-17-33-50-215.evtx | Windows\System32\winevt\Logs\Microsoft-Windows-Security-SPP-UX-I |
| Windows\System32\winevt\Logs\Archive-EMS System-2021-02-09-17-46-57-607.evtx | Windows\System32\winevt\Logs\Microsoft-Windows-Security-UserCon |
| Windows\System32\winevt\Logs\Archive-EMS System-2021-05-16-17-20-24-507.evtx | Windows\System32\winevt\Logs\Microsoft-Windows-ServerEssentials- |
| Windows\System32\winevt\Logs\Archive-EMS System-2021-05-14-07-23-24-216.evtx | Windows\System32\winevt\Logs\Microsoft-Windows-ServerManager-C |
| Windows\System32\winevt\Logs\Archive-EMS System-2021-05-12-14-51-41-139.evtx | Windows\System32\winevt\Logs\Microsoft-Windows-SettingSync-Azuri |
| Windows\System32\winevt\Logs\Archive-EMS System-2021-05-18-04-06-37-355.evtx | Windows\System32\winevt\Logs\Microsoft-Windows-SettingSync-Azuri |
| Windows\System32\winevt\Logs\Archive-EMS System-2021-05-18-09-54-24-839.evtx | Windows\System32\winevt\Logs\Microsoft-Windows-SIPProvider%4Opr |
| Windows\System32\winevt\Logs\Archive-EMS System-2021-05-19-14-52-50-172.evtx | Windows\System32\winevt\Logs\Microsoft-Windows-SmartCard-Audit |
| Windows\System32\winevt\Logs\Archive-EMS System-2021-05-22-06-37-33-489.evtx | Windows\System32\winevt\Logs\Microsoft-Windows-SmartCard-Device |
| Windows\System32\winevt\Logs\Archive-EMS System-2021-05-12-03-16-22-000.evtx | Windows\System32\winevt\Logs\Microsoft-Windows-SmartCard-TPM-1 |
| Windows\System32\winevt\Logs\Archive-EMS System-2021-05-21-19-02-14-166.evtx | Windows\System32\winevt\Logs\Microsoft-Windows-SmartCard-TPM-1 |
| Windows\System32\winevt\Logs\Archive-EMS System-2021-05-22-00-50-01-529.evtx | Windows\System32\winevt\Logs\Microsoft-Windows-SMBDirect%4ADR |
| Windows\System32\winevt\Logs\Archive-EMS System-2021-05-14-01-35-37-340.evtx | Windows\System32\winevt\Logs\Microsoft-Windows-SMBWitnessClie |
| Windows\System32\winevt\Logs\Archive-EMS System-2021-05-13-14-00-17-879.evtx | Windows\System32\winevt\Logs\Microsoft-Windows-SMBWitnessClie |
| Windows\System32\winevt\Logs\Archive-EMS System-2021-05-23-17-23-46-597.evtx | Windows\System32\winevt\Logs\Microsoft-Windows-Storage-Tiering% |
| Windows\System32\winevt\Logs\Archive-EMS System-2021-05-12-20-37-42-553.evtx | Windows\System32\winevt\Logs\Microsoft-Windows-Storage-StorageManag |
| Windows\System32\winevt\Logs\Archive-EMS System-2021-05-12-09-03-54-186.evtx | Windows\System32\winevt\Logs\Microsoft-Windows-StorageSpaces-Di |
| Windows\System32\winevt\Logs\Archive-EMS System-2021-05-17-10-43-31-360.evtx | Windows\System32\winevt\Logs\Microsoft-Windows-StorageSpaces-Di |
| Windows\System32\winevt\Logs\Archive-EMS System-2021-05-17-04-55-44-339.evtx | Windows\System32\winevt\Logs\Microsoft-Windows-StorageSpaces-Sg |
| Windows\System32\winevt\Logs\Archive-EMS System-2021-05-17-22-18-50-801.evtx | Windows\System32\winevt\Logs\Microsoft-Windows-StorageSpaces-Sg |
| Windows\System32\winevt\Logs\Archive-EMS System-2021-05-13-19-47-50-347.evtx | Windows\System32\winevt\Logs\Microsoft-Windows-SystemSettingsTI |
| Windows\System32\winevt\Logs\Archive-EMS System-2021-05-15-06-34-10-708.evtx | Windows\System32\winevt\Logs\Microsoft-Windows-TCP/IP%4Operatic |
| Windows\System32\winevt\Logs\Archive-EMS System-2021-05-20-02-28-13-043.evtx | Windows\System32\winevt\Logs\Microsoft-Windows-TerminalServices |
| Windows\System32\winevt\Logs\Archive-EMS System-2021-05-18-21-29-43-807.evtx | Windows\System32\winevt\Logs\Microsoft-Windows-TerminalServices |
| Windows\System32\winevt\Logs\Archive-EMS System-2021-05-15-00-46-23-325.evtx | Windows\System32\winevt\Logs\Microsoft-Windows-TerminalServices |
| Windows\System32\winevt\Logs\Archive-EMS System-2021-05-15-18-09-30-390.evtx | Windows\System32\winevt\Logs\Microsoft-Windows-TerminalServices |
| Windows\System32\winevt\Logs\Archive-EMS System-2021-05-20-14-03-47-942.evtx | Windows\System32\winevt\Logs\Microsoft-Windows-TerminalServices |
| Windows\System32\winevt\Logs\Archive-EMS System-2021-05-23-11-36-14-332.evtx | Windows\System32\winevt\Logs\Microsoft-Windows-TerminalServices |
| Windows\System32\winevt\Logs\Archive-EMS System-2021-05-16-11-32-36-872.evtx | Windows\System32\winevt\Logs\Microsoft-Windows-TerminalServices |
| Windows\System32\winevt\Logs\Archive-EMS System-2021-05-20-08-16-00-636.evtx | Windows\System32\winevt\Logs\Microsoft-Windows-TerminalServices |
| Windows\System32\winevt\Logs\Archive-EMS System-2021-05-23-05-48-27-189.evtx | Windows\System32\winevt\Logs\Microsoft-Windows-TerminalServices |
| Windows\System32\winevt\Logs\Archive-EMS System-2021-05-22-12-25-20-731.evtx | Windows\System32\winevt\Logs\Microsoft-Windows-TerminalServices |
| Windows\System32\winevt\Logs\Microsoft-Windows-UniversalTelemetryClient%4Operational.evtx | Windows\System32\winevt\Logs\Microsoft-Windows-TerminalServices |
| Windows\System32\winevt\Logs\Microsoft-Windows-NetworkProfile%4Operational.evtx | Windows\System32\winevt\Logs\Microsoft-Windows-TerminalServices |
| Windows\System32\winevt\Logs\Microsoft-Windows-Kernel-StoreMgr%4Operational.evtx | Windows\System32\winevt\Logs\Microsoft-Windows-TerminalServices |
| Windows\System32\winevt\Logs\Microsoft-Windows-SMBServer%4Operational.evtx | Windows\System32\winevt\Logs\Microsoft-Windows-TZSync%4Operati |
| Windows\System32\winevt\Logs\Archive-EMS System-2019-07-19-09-27-36-681.evtx | Windows\System32\winevt\Logs\Microsoft-Windows-TZUtil%4Operatic |
| Windows\System32\winevt\Logs\Microsoft-Windows-SMBServer%4Security.evtx | Windows\System32\winevt\Logs\Microsoft-Windows-UAC%4Operatio |
| Windows\System32\winevt\Logs\Archive-EMS System-2019-07-23-03-48-10-012.evtx | Windows\System32\winevt\Logs\Microsoft-Windows-UAC-FileVirtualiz |
| Windows\System32\winevt\Logs\Microsoft-Windows-SMBServer%4Connectivity.evtx | Windows\System32\winevt\Logs\Microsoft-Windows-User Device Regit |
| Windows\System32\winevt\Logs\Archive-EMS System-2019-08-14-17-50-17-089.evtx | Windows\System32\winevt\Logs\Microsoft-Windows-User-Loader%4O |
| Windows\System32\winevt\Logs\Archive-EMS System-2019-08-22-06-31-22-632.evtx | Windows\System32\winevt\Logs\Microsoft-Windows-VerifyHardwareS |
| Windows\System32\winevt\Logs\Archive-EMS System-2019-08-03-10-49-41-423.evtx | Windows\System32\winevt\Logs\Microsoft-Windows-Volume%4Diagn |
| Windows\System32\winevt\Logs\Microsoft-Windows-Dhcp-Server%4Operational.evtx | Windows\System32\winevt\Logs\Microsoft-Windows-VPN-Client%4Opr |
| Windows\System32\winevt\Logs\Microsoft-Windows-Dhcp-Server%4FilterNotifications.evtx | Windows\System32\winevt\Logs\Microsoft-Windows-VPN%4Operatio |
| Windows\System32\winevt\Logs\DhcpAdminEvents.evtx | Windows\System32\winevt\Logs\Microsoft-Windows-WFP%4Operatio |
| Windows\System32\winevt\Logs\Archive-EMS System-2019-08-26-00-51-55-728.evtx | Windows\System32\winevt\Logs\Microsoft-Windows-Win32k%4Operati |
| Windows\System32\winevt\Logs\Archive-EMS System-2019-08-07-05-09-14-598.evtx | Windows\System32\winevt\Logs\Microsoft-Windows-WindowsSystem/ |
| Windows\System32\winevt\Logs\DNS Server.evtx | Windows\System32\winevt\Logs\Microsoft-Windows-Winsock-WS2HEL |

| | |
|--|---|
| Windows\System32\winevt\Logs\Microsoft-Windows-DNSServer%4Audit.evtx | Windows\System32\winevt\Logs\Microsoft-Windows-Wired-AutoConfig%4 |
| Windows\System32\winevt\Logs\Archive-EMS System-2019-08-10-23-29-48-856.evtx | Windows\System32\winevt\Logs\Microsoft-Windows-Workplace Join%4Ad |
| Windows\System32\winevt\Logs\Archive-EMS System-2019-08-18-12-10-49-482.evtx | Windows\System32\winevt\Logs\Microsoft-Windows-WPD-ClassInstaller%4 |
| Windows\System32\winevt\Logs\Archive-EMS System-2019-09-02-13-32-58-546.evtx | Windows\System32\winevt\Logs\Microsoft-Windows-WPD-CompositeClass |
| Windows\System32\winevt\Logs\Archive-EMS System-2019-08-29-19-12-25-021.evtx | Windows\System32\winevt\Logs\Microsoft-Windows-WPD-MTPClassDriver |
| Windows\System32\winevt\Logs\Microsoft-Windows-SMBServer%4Audit.evtx | Windows\System32\winevt\Logs\SMSApi.evtx |

Analysis Summary

Analysis of the Mesa County Dominion Voting Systems EMS server identified that extensive deletion of both election data and election-related data, comprising election records which must and should have been preserved under Federal and Colorado law, has occurred either as a result of or coincident with the vendor's and CO Secretary of State's modification of the system from version 5.11-CO to 5.13. This deleted data is critical to any effort to reconstruct events taking place on the voting systems, and to determine if unauthorized access or operation of the voting systems took place.

Furthermore, the EMS server application logging functions are configured to "Overwrite events as needed" if arbitrarily-selected file storage sizes are exceeded, which could predictably and likely has resulted in the systematic, automated deletion of logfile content comprising election-related data.

This systemic deletion of logfile data requires additional investigation.

CONCLUSION

This forensic examination found that significant election record preservation requirements under the 2002 VSS and Federal and state law HAVE NOT BEEN MET and further that destruction of Election-Related Data, specifically critical logfiles, has occurred. This destruction is not incidental or minor but is *highly significant*.

These findings have been demonstrated in this report and evidence has been presented demonstrating *conclusively to both computer systems experts as well as legal professionals and the general public at large* that the facts in these findings support the conclusions that:

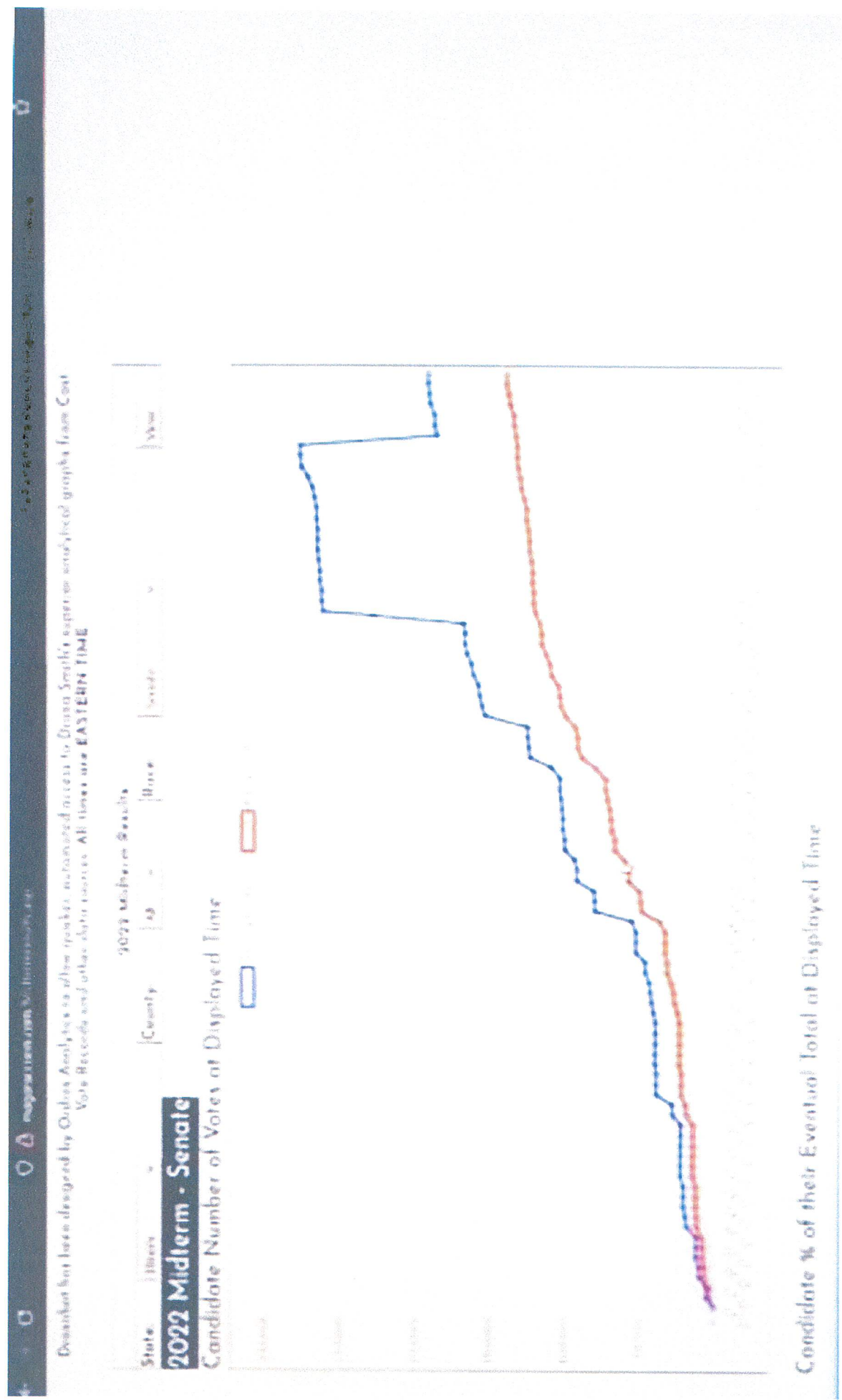
- 1) Election-related data and election data explicitly required to be preserved, as described in the 2002 VSS criteria referenced in this section, HAS BEEN DESTROYED IN VIOLATION OF THE LAW, and
- 2) The specific configuration settings of the server examined lead to the understanding that Certification Requirements for Voting Systems have likely not been met despite this system having been certified and thereby approved for use in Colorado by the Colorado Secretary of State.

Further investigation is required to determine the full scope of non-compliance with legal mandates for voting systems and election records, and whether the non-compliance is deliberate or simply negligent.

2022 MID TERM NOVEMBER ELECTION ILLINOIS SENATE RACE

Live Internet Cast Vote Reporting

Notice the 1,000,000+ vote spike and then being subtracted 30 minutes later, What caused that?



... ..

... ..

... ..

... ..

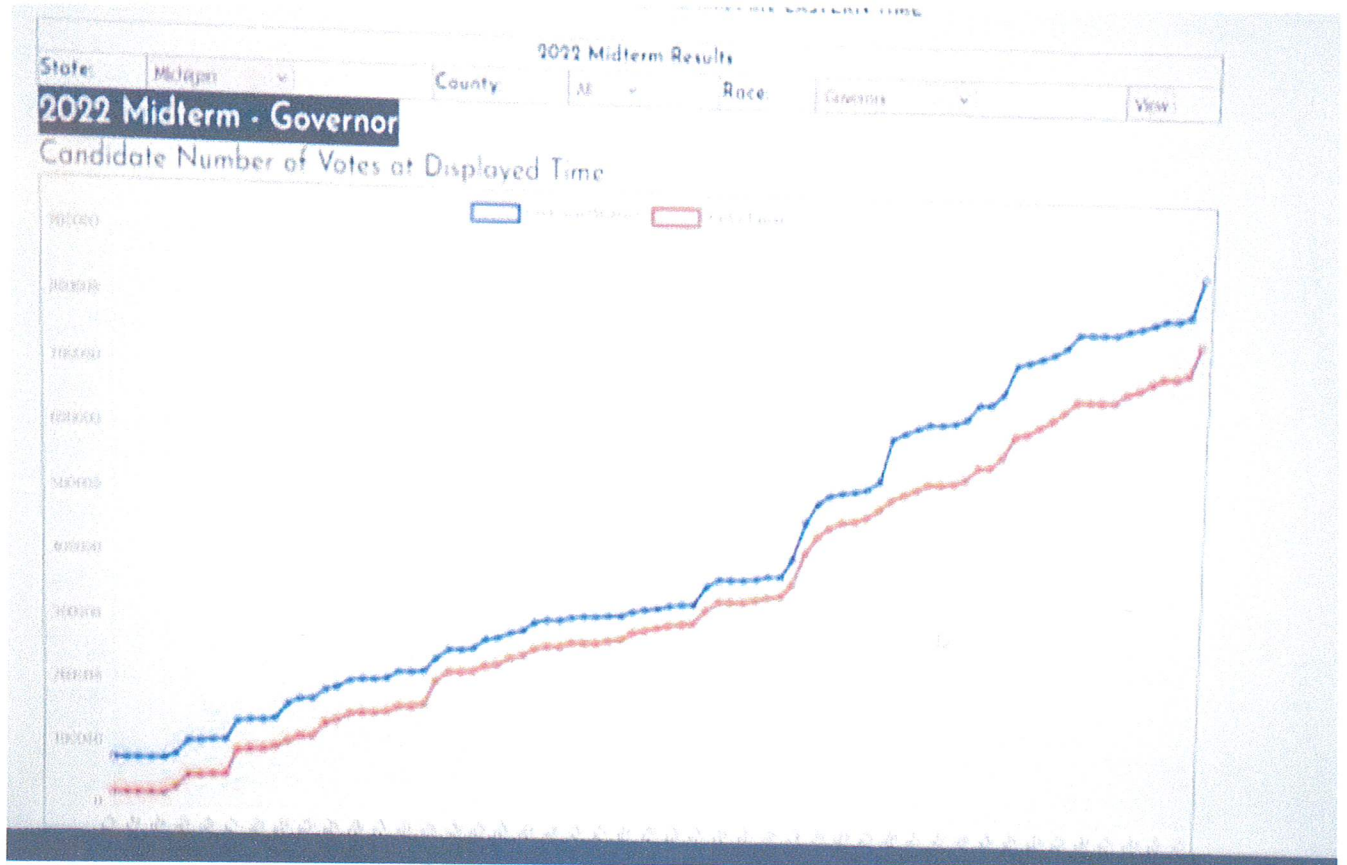
... ..

2022 MID TERM NOVEMBER ELECTION

MICHIGAN GOVERNOR RACE

Live Internet Cast Vote Reporting

Notice Who Starts Off 60,000 Votes Ahead. Does That Make Sense?



EDISON REPORT ON REAL TIME RESULTS 2022

1941年12月1日
1941年12月1日
1941年12月1日
1941年12月1日

1941年12月1日

1941年12月1日

1941年12月1日